

# HygroMATIK® SPA

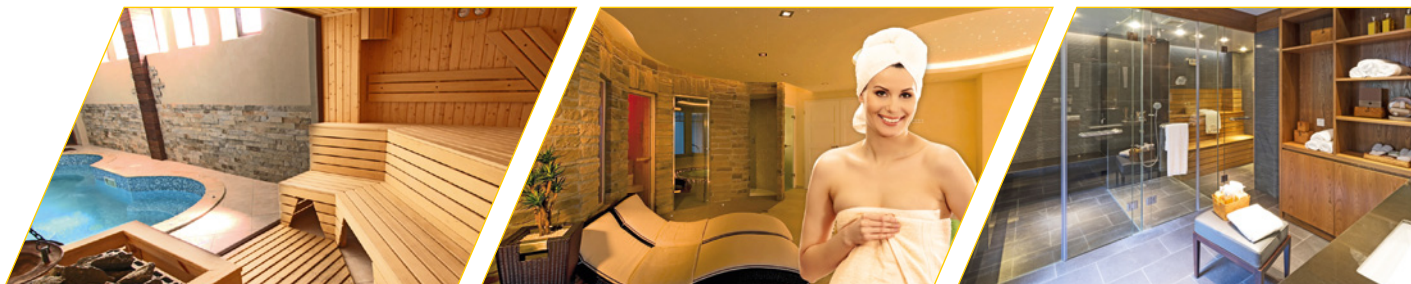
## FlexLine

Steam generators



### New flexibility in award-winning quality

- A series of units with a wide performance range for every area of application
- Individual configuration
- Easy operation
- Highest quality
- Environmentally friendly, incorporating reusable components
- **Plus X Award** in three categories and „Best Product 2018“



Steam generation  
for spa and wellness applications

# New flexibility in award-winning quality

The HygroMatik FlexLine as a modular system

## Flexibility pays dividends.

The HygroMatik FlexLine represents a new generation of steam generators which consists of a basic model that can be expanded to create an individual solution suitable for all steam requirements.

### Advantages:

- Ease of installation by means of individual pre-configuration ex factory
- Expansion options for retrofitting
- You only invest in the functions you really need

In order to make this flexibility available to our customers quickly, we have developed a modular system. This was awarded in three categories with the **Plus X Award** and FlexLine named „Best Product of the Year 2018“.

## Custom-made for every AREA OF APPLICATION.

The basic FlexLine model is the basis for all other configuration options. Thanks to individual extension capability the FlexLine can be adapted to the differing applications in the spa and wellness sector.



Spa resorts and wellness hotels

Fitness clubs and gyms

Cruise ships

## Using the best METHOD for optimum steam production.

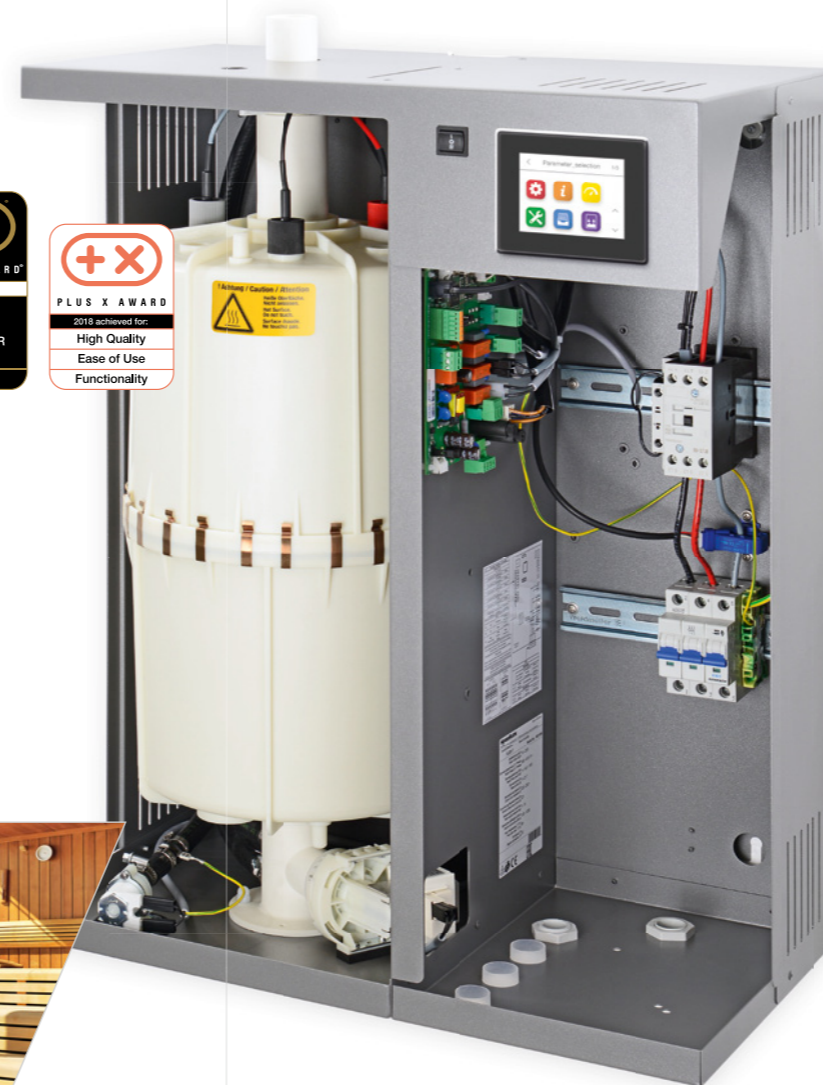
FlexLine is available as an electrode as well as a heater element steam generator – depending on your water quality and the required degree of control accuracy.



Replaceable stainless steel large area electrodes for different conductivities



Resistor type heater elements in highly corrosion-resistant alloy



## Always the right PERFORMANCE for a rich steam picture.

Equip HygroMatik FlexLine with the power you need for optimum steam output. 15 performance classes with steam output from 3 kg/h to 130 kg/h selectable in 6 unit sizes. In addition, individual performance adjustments can be programmed both at the factory and on site.

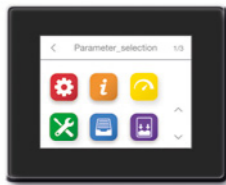
## Manifold OPTIONS for a steam solution that fits perfectly.

Every installation is different, and so every project places unique requirements on the steam solution. The FlexLine can be equipped with a wide range of options to optimally meet your project requirements. Whether you choose HyCool (integrated waste water cooling) or the SuperFlush function (cylinder flushing device) depends entirely on your project. If needed, all options can be retrofitted. We are always pleased to provide advice.

# Benefit from extensive functions

Powerful, smart and efficient

## Excellent ease of operation.



3.5" touch display



OPTIONAL: Spa Touch Control  
5" touch display for external control

All HygroMatik FlexLine units are equipped with a capacitive 3.5" touch display. Operation and programming are selected via a flat and intuitive menu structure analogous to modern smartphone logic. In addition to this, subsequent software updates are quickly and easily possible via USB flash.

- At a glance comprehensible pictographs provide information on the operating condition
- Simple and fast navigation
- Information and system messages displayed as plain text
- Easy planning of operating periods by means of programmable timer functions
- Readout of service messages with date and time
- Integrated real-time clock



## Smart control – powerful and quick response.

The improved control and regulation technology of FlexLine units provides extensive possibilities that are simple and easy to operate.

- **Highest regulating accuracy and top protection** against excessive temperatures by means of second supply air and ventilation steam bath fan
- The option of up to **4 different lighting scenarios**
- Flexible switchover of up to **4 essences** without changing containers
- Freely programmable, overload-protected **digital input**
- **Integrated communication** protocol Modbus RTU or BACnet
- **Numerous control and reporting functions** can be assigned to up to 11 relays depending on the unit



## Optimised unit performance for efficient utilisation.

As with all our products, the HygroMatik FlexLine has been developed for an especially long life. The units feature technologies that not only reduce the amount of maintenance required, but also the wear of components. In addition, they are highly efficient with energy and resources.

- **Adjustable load shedding** between 25 and 100%, in order to adapt operation temporarily or permanently
- Active energy saving with the **ECO function** and flexible adjustment of the timer functions
- **Long-term continuous operation:** A robust base material provides our reusable cylinders with high temperature resistance and dimensional stability
- The **split cylinder** is easy to open and can be cleaned without using chemicals
- **Extremely durable:** All FlexLine cabinets are manufactured in corrosion-resistant stainless steel; the powder coating of the housing increases the lifespan and offers optimum work safety
- **Robust blowdown pump** for removing scale deposits to ensure long operating life cycles and minimal maintenance
- **Highest safety standard** in the market for electrode steam humidifiers due to integrated mechanical protection switch
- Heater steam generators with electronic, **proportional level control** with no wear parts



## Comprehensive service functions.



We have equipped the HygroMatik FlexLine with intelligent service functions and innovative features for operational safety. These provide a new level of safety, reliability, control and comfort.

- **Innovative:** Preventive maintenance through permanent monitoring and intelligent evaluation of operating parameters can avoid unplanned downtimes
- **Convenient:** Detailed messages enable deviations to be identified and rectified more quickly
- **Simple:** The diagnostic mode can be started directly via the touch display without commissioning the unit completely
- **Flexible:** Service intervals can be calculated by the unit according to time as well as the amount of steam produced



## For the sake of the environment

Active energy saving with the **ECO function**

Robust and durable cabinet

Reusable steam cylinders

Long and flexible service intervals

High resource efficiency



## FlexLine electrodes technical data

A higher humidification performance is possible by connecting units together.

Type	FLE05	FLE10	FLE15	FLE20	FLE25
Steam output [kg/h]	4.8-5.2	9.5-10.4	14.3-15.6	19.0-20.8	24.0-26.0
Electrical connection <sup>(1)</sup>	380-415V / 3Ph / 50-60Hz				
Rated power [kW]	3.6-3.9	7.1-7.8	10.8-11.7	14.3-15.6	18.0-19.5
Nominal current [A]	5.4	10.8	16.3	21.7	27.2
Fuse [A] <sup>(2)</sup>	3 x 10	3 x 16	3 x 20	3 x 32	
Number of steam cylinder	1				
Control	FlexLine mainboard with capacitive 3.5" touch colour display				
Separate control voltage <sup>(3)</sup>	220-240 V / N / 2.5A				
Steam hose connection [mm]	1 x 40				
Empty weight [kg]	16		22		23
Max. filling capacity [l]	5		13		
Operating weight [kg]	21		36		37
Dimensions WxHxD [mm] <sup>(5)</sup>	540 x 535 x 320		540 x 695 x 320		
Water connection	Tap water of varying qualities, 1 to 10 bar, for 3/4" external thread				
Drain water connection	Connection Ø 1 1/4"				

FLE30	FLE40	FLE50	FLE65	FLE80	FLE100	FLE130
28.5-31.2	38.2-41.7	48.0-52.0	62.0-67.5	76.4-83.4	95.5-104.4	124.0-135.0
380-415V / 3Ph / 50-60Hz						
21.4-23.4	28.6-31.2	35.9-39.2	46.3-50.6	2 x 28.6-31.2	2 x 35.9-39.2	2 x 46.3-50.6
32.5	43.5	54.5	70.4	2 x 43.5	2 x 54.5	2 x 70.4
3 x 40	3 x 50	3 x 63	3 x 80	2 x 3 x 50	2 x 3 x 63	2 x 3 x 80
1				2		
FlexLine mainboard with capacitive 3.5" touch colour display						
220-240 V / N / 2.5A						
1 x 40	2 x 40 <sup>(4)</sup>	2 x 40		2 x 40 <sup>(4)</sup>	4 x 40	
26	27	33	34	66	75	
21		36		42	71	
47	48	69	70	108	147	
580 x 750 x 355		640 x 785 x 420		1130 x 750 x 420	1170 x 785 x 420	
Tap water of varying qualities, 1 to 10 bar, for 3/4" external thread						
Connection Ø 1 1/4"				2 x Connection Ø 1 1/4"		

From our accessories range



Stainless steel nozzle with protective cover



Temperature sensor TF 105



## FlexLine heaters technical data

A higher humidification performance is possible by connecting units together.

Type	FLH03	FLH06	FLH09	FLH15	FLH25	FLH30	FLH40	FLH50	FLH80	FLH100
Steam output [kg/h]	2.7-3.3	5.5-6.5	8.2-9.8	13.7-16.4	22.7-27.1	27.4-32.7	36.5-43.5	45.5-54.3	73.0-87.0	91.0-108.6
Electrical connection <sup>(1)</sup>	220-240V / 1Ph / 50-60Hz			380-415V / 3Ph / 50-60Hz						
Rated power [kW]	2.1-2.4	4.1-4.9	6.2-7.3	10.3-12.3	17.1-20.3	20.6-24.5	27.3-32.6	34.1-40.7	2 x 27.3-32.6	2 x 34.1-40.7
Nominal current [A]	9.4-10.2	18.7-20.4	10.7-11.7	16.0-17.5	15.6-17.1	25.9-28.3	31.3-34.1	41.5-45.4	51.8-56.6	2 x 41.5-45.4
Fuse [A]	1 x 16	1 x 25	3 x 16	3 x 20		3 x 32	3 x 35	3 x 50	3 x 63	2 x 3 x 50
Number of steam cylinder	1								2	
Control	FlexLine mainboard with capacitive 3.5" touch colour display									
Separate control voltage <sup>(3)</sup>	220-240V / N / 2.5A									
Steam hose connection [mm]	1 x 40					1 x 40 <sup>(4)</sup>	2 x 40		4 x 40	
Empty weight [kg]	18	19		25	36	37		75	80	
Max. filling capacity [l]	5			14	36		71			
Operating weight [kg]	23	24		40	72	74		147	152	
Dimensions WxHxD [mm] <sup>(5)</sup>	540 x 535 x 320			540 x 695 x 320		640 x 785 x 420		1170 x 785 x 420		
Water connection	Fully demineralised water / cleaned condensate / partially softened water / tap water of varying qualities, 1 to 10 bar, for 3/4" external thread									
Drain water connection	Connection Ø 1 1/4"								2 x Connection Ø 1 1/4"	

You can find other spa accessories in our spa accessories leaflet.

We reserve the right to make technical changes.

- (1) Other voltages upon request.
- (2) 13/28% above nominal power consumption after full blowdown. Observe actuation characteristics of automatic circuit-breakers. If necessary, select the next highest circuit-breaker level.
- (3) Internal control voltage upon request.
- (4) Incl. Y-piece DN40.
- (5) Outer dimensions of width and depth. Height incl. drain connection.



## Our service for 100% customer satisfaction

- Long availability of replacement parts
- Technical hotline +49 4193 895-293 or [hotline@hygromatik.com](mailto:hotline@hygromatik.com)
- HygroMatik distributes in more than 45 countries
- Operating manuals, planning data and information on workshop events available online at [www.hygromatik.com](http://www.hygromatik.com)

**HYGROMATIK** SPA

HygroMatik GmbH  
Lise-Meitner-Str. 3  
24558 Henstedt-Ulzburg  
Germany

T +49 4193 895-0  
F +49 4193 895-33  
[hy@hygromatik.de](mailto:hy@hygromatik.de)  
[www.hygromatik.com](http://www.hygromatik.com)

member of **CAREL group**

