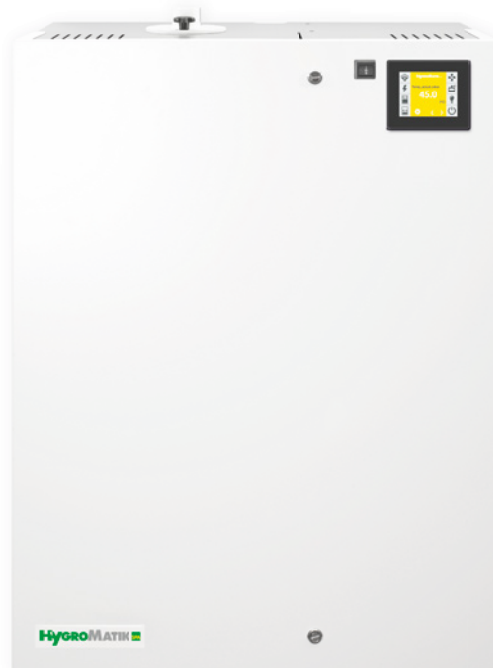




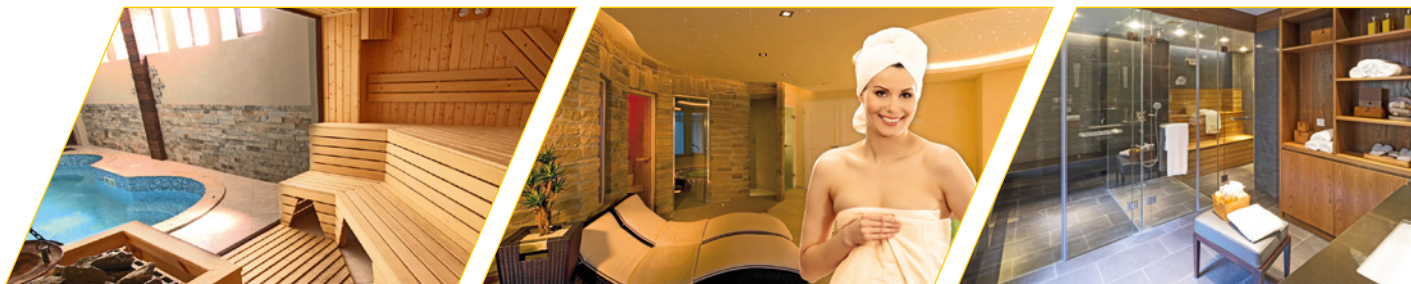
FlexLine Plus

Heater type steam generators



The HygroMatik FlexLine Plus units complement the FlexLine series with an extremely robust and long-lasting design on new **heater type steam generators**.

- Steam cylinders made of corrosion-resistant stainless steel
- Integrated rinsing and lime collection system
- Hygienic and mineral-free steam
- Individual configuration



Steam generation
for spa and wellness applications

HygroMatik FlexLine Plus

High-quality, low-maintenance and durable

The robust stainless steel cylinders – high quality and hygienically clean.

The stainless steel cylinders of the HygroMatik FlexLine Plus generate hygienic, mineral-free steam and are explicitly designed for spa and wellness applications.

- The **stainless steel split cylinders** can be opened easily and cleaned without chemicals
- The **robust heater mounting** allows a simple and fast installation and removal of the heating elements
- Available in two cylinder sizes with **volumes attuned to the humidification capacity**



Compact and low-maintenance.

When operated with softened or tap water, the minerals and salts contained in the water precipitate. These deposits are stirred up by the **integrated rinsing and lime collection system** during partial blowdown and can be removed by the **powerful blowdown pump**. The amount of particles accumulated in the strainer is thus significantly reduced.

- The combined rinsing and lime collection system is integrated in the unit and ensures **compact dimensions** for HygroMatik FlexLine Plus
- **Robust removable strainer** allows easy removal of hardeners
- Plug connections, cylinder clamping ring and steam hose adapter enable **fast and easy maintenance**



Large cylinder
(FLP30 - FLP50)

Benefit from extensive functions

Powerful, smart and efficient

Excellent ease of operation.

All HygroMatik FlexLine Plus units are equipped with a capacitive 3.5" touch display. Operation and programming are selected via a flat and intuitive menu structure analogous to modern smartphone logic. In addition to this, subsequent software updates are quickly and easily possible via USB flash.

- At a glance comprehensible pictographs provide information on the operating condition
- Simple and fast navigation
- Information and system messages displayed as plain text
- Easy planning of operating periods by means of programmable timer functions
- Readout of service messages with date and time
- Integrated real-time clock



Smart control – powerful and quick response.

The improved control and regulation technology of the HygroMatik FlexLine Plus units provides extensive possibilities that are simple and easy to operate.

- **Highest regulating accuracy and top protection** against excessive temperatures by means of second supply air and ventilation steam bath fan
- The option of up to **4 different lighting scenarios**
- Flexible switchover of up to **4 essences** without changing containers
- Freely programmable, overload-protected **digital input**
- **Integrated communication protocol** Modbus RTU or BACnet
- **Numerous control and reporting functions** can be assigned to up to 11 relays depending on the unit

Durable and safe.

HygroMatik FlexLine Plus unit heat the water with the aid of one, three or six resistance heaters in the stainless steel cylinder according to the immersion heater principle.

The heaters are made of **highly corrosion-resistant Incoloy825** (chrome-nickel-molybdenum alloy) and therefore extremely durable. The mechanical overheating protection of the heaters together with the electronic proportional level control provides double protection.



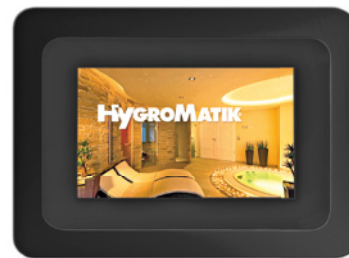
Resistor type heater elements in highly corrosion-resistant alloy



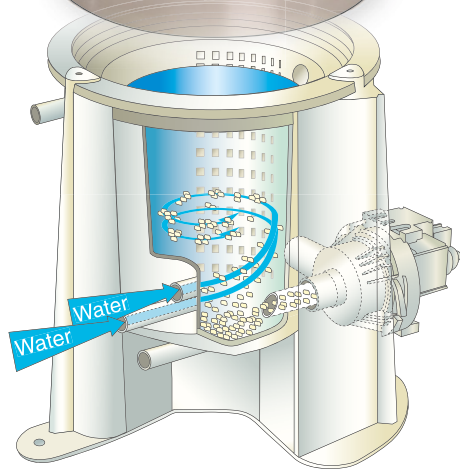
Small cylinder (FLP05 - FLP25)



3,5" touch display



OPTIONAL: Spa Touch Control 5" touch display for external control

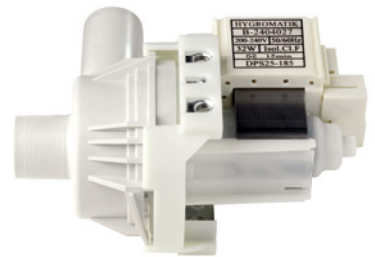


Integrated rinsing and lime collection system

Optimised unit performance for efficient utilisation.

HygroMatik FlexLine Plus has been developed, like all our products, for particularly long operating times. The units are characterised by technologies that, in addition to the maintenance effort, minimise the wear of unit components and use energy and resources in a highly efficient manner.

- **Adjustable load shedding** between 25 and 100%, in order to adapt operation temporarily or permanently
- Active energy saving with the **ECO function** and flexible adjustment of the timer functions
- **Extremely durable:** All FlexLine cabinets are manufactured in corrosion-resistant stainless steel; the powder coating of the housing increases the lifespan and offers optimum work safety
- **Robust blowdown pump** for removing scale deposits to ensure long operating life cycles and minimal maintenance
- Heater steam generators with electronic, **proportional level control** with no wear parts



For the sake of the environment

Active energy saving with the ECO function

Robust and durable cabinet

Reusable steam cylinders

Long and flexible service intervals

High resource efficiency

Comprehensive service functions.



We have equipped the HygroMatik FlexLine Plus with intelligent service functions and innovative features for operational safety. These provide a new level of safety, reliability, control and comfort.

- **Innovative:** Preventive maintenance through permanent monitoring and intelligent evaluation of operating parameters can avoid unplanned downtimes
- **Convenient:** Detailed messages enable deviations to be identified and rectified more quickly
- **Simple:** The diagnostic mode can be started directly via the touch display without commissioning the unit completely
- **Flexible:** Service intervals can be calculated by the unit according to time as well as the amount of steam produced

FlexLine Plus technical data

A higher humidification performance is possible by connecting units together.

Type	FLP05	FLP08	FLP15	FLP25	FLP30	FLP40	FLP50
Steam output [kg/h]	4.6-5.5	7.6-9.0	13.7-16.4	22.7-27.1	27.4-32.7	36.5-43.5	45.5-54.3
Electrical connection ⁽¹⁾	380-415V / 3Ph / 50-60Hz						
Rated power [kW]	3.4-4.1	5.7-6.8	10.3-12.3	17.1-20.3	20.6-24.5	27.3-32.6	34.1-40.7
Nominal current [A]	9.0-9.9	15.0-16.3	15.6-17.1	25.9-28.3	31.2-34.1	41.5-45.4	51.8-56.6
Fuse [A]	3 x 16	3 x 20		3 x 32	3 x 35	3 x 50	3 x 63
Number of steam cylinder	1						
Control	FlexLine mainboard with capacitive 3.5" touch colour display						
Separate control voltage ⁽³⁾	220-240V / N / 2.5A						
Steam hose connection [mm]	1 x 40				1 x 40 ⁽⁴⁾	2 x 40	
Empty weight [kg]	32		35		41		
Max. filling capacity [l]	15				30		
Operating weight [kg]	47		50		71		
Dimensions WxHxD [mm] ⁽⁵⁾	650 x 855 x 380						
Water connection	Fully demineralised water / cleaned condensate / partially softened water / tap water of varying qualities, 1 to 10 bar, for 3/4" external thread						
Drain water connection	Connection Ø 1 1/4"						

We reserve the right to make technical changes.

(1) Other voltages upon request.

(3) Internal control voltage upon request.

(4) Incl. Y-piece DN40.

(5) Outer dimensions of width and depth. Height incl. drain connection.

From our accessories range (You can find other spa accessories in our spa accessories leaflet)



Stainless steel nozzle
with protective cover



Temperature sensor
TF 105

HYGROMATIK[®] SPA

HygroMatik GmbH
Lise-Meitner-Str. 3
24558 Henstedt-Ulzburg
Germany

T +49 4193 895-0
F +49 4193 895-33
hy@hygromatik.de
www.hygromatik.com

member of CAREL group

