



HeaterSlim technical data

Type	HS06		HS10	
Steam output [kg/h]	6.6		10.0	
Electrical connection	220-240V / 1Ph / N / 50-60Hz	380-415V / 3Ph / N / 50-60Hz	220-240V / 1Ph / N / 50-60Hz	380-415V / 3Ph / N / 50-60Hz
Rated power [kW]	5.0		7.5	
Rated current [A]	21.7	10.9	32.6	10.9
Fuse [A]	1 x 25	2 x 16	1 x 35	3 x 16
Number of steam cylinder	1			
Steam hose connection [mm]	1 x 40			
Empty weight [kg]	13.5		13.7	
Max. filling capacity [l]	3.0		3.0	
Operating weight [kg]	18.0		18.0	
Dimensions WxHxD [mm] (1)	580 x 370 x 170			
Water connection	Fully demineralised water / cleaned condensate / partially softened water / tap water of varying qualities, 1 -10 bar, for 3/4" external thread			
Drain water connection	Connection Ø 1 1/4"			

We reserve the right to make technical changes.

(1) Outer dimensions of width and depth.
Height incl. drain connection.

HygroMatik GmbH
Lise-Meitner-Str. 3
24558 Henstedt-Ulzburg
Germany
T +49 4193 895-0
F +49 4193 895-33
hy@hygromatik.de
www.hygromatik.com

member of CAREL group



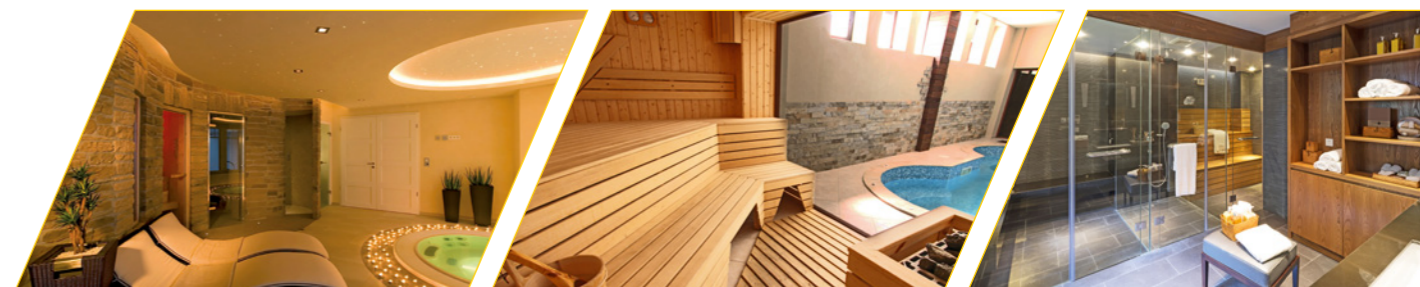
HeaterSlim

Heater steam generator

The compact solution for quality-conscious energy savers



- Compact dimensions – designed for narrow recesses
- Environmentally friendly unit design with re-usable components
- High energy efficiency through insulated stainless steel cylinders and ECO function
- Hygienically clean steam for maximum relaxation
- Attractive price-performance ratio



Hygienically clean steam

for spa and wellness applications

The compact solution for quality-conscious energy savers

The new heater steam generator HygroMatik HeaterSlim

Handy, compact and extremely easy to maintain.

The HygroMatik HeaterSlim was specially designed for applications calling for **compact and manageable solutions**. Because of its dimensions and its low weight, assembly is possible in nearly any recess. Easily accessible components and a cylinder that is easy to remove after fast and easy maintenance and cleaning as usual.

- Low space requirements and recess attachment are possible through compact dimensions
- Easy assembly thanks to the low weight
- Digital controlling, read-out and parameter setting through the integrated communication protocol Modbus RTU
- Fast and easy maintenance and cleaning
- Especially low maintenance with the use of softened or fully demineralized water

Efficiency and flexibility through an intelligent and environmentally friendly unit design.

Its intelligent unit design makes the HeaterSlim an **efficient and flexible steam generator** with numerous convincing advantages.

- Re-usable cylinder and ECO function spare resources
- Insulated stainless steel cylinder reduces loss of heat
- Flexible performance adjustment by the user possible
- Connections for 230V as well as 400V available
- Control switch for operating mode display, visible from the front

Hygienically clean steam for maximum relaxation.

Hygiene and safety come first with the generation of steam in spa applications. High-quality components and innovative functions reliably ensure hygienically clean steam and make a crucial contribution to the desired result – health-promoting and soothing relaxation.

- Short warm-up time and fast start behaviour
- Steady steam production for a constant steam bath temperature
- Intelligent blow down management prevents standing water
- Monitoring of the maximum temperature with security switch-off
- Single stage temperature control



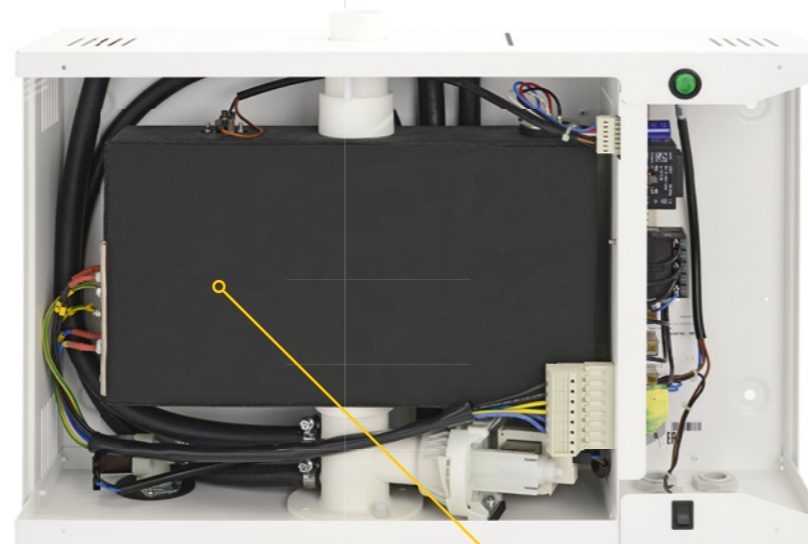
Spa Touch Control

Easy handling with the Spa Touch Control. (optional)

HeaterSlim is optimally designed for use with the **Spa Touch Control**. With the external, fixed 5" touch display, temperature, fragrance and light in the steam bath can be controlled easily and conveniently.

- Display surface with IP65 protection class*
- Resistant, capacitive 5" touch display for precise, finger-exact input
- Resolution 800 x 480, 65k colours
- Configurable range of functions (desired temperature, fragrance, etc.)
- Real-time clock with run-time and timer program
- Excellent reliability due to steam generator servicing and error notifications

* IP65 protection class requires corresponding wall insulation when installed.



Seal kit for easy maintenance



Heater element (corrosion-resistant)

Insulated stainless steel cylinder