



# Portable Instruments



Pressure • Temperature • Humidity • Velocity and Airflow • Tachometry • Air quality • Sound level • Light



[www.kimo.fr](http://www.kimo.fr)

EUROPEAN MANUFACTURER

## Class 100 & 200

**Thermometers** Page **4**

**Hygrometers** Page **6**

**Anemometers** Page **8**

**Manometers** Page **10**

**Air quality** Page **12**

**Tachometer** Page **12**

**Gas detection** Page **16**

**Infrared thermometers** Page **16**

**Sound level meters** Page **20**

**Noise dosimeters** Page **21**

**Luxmeters** Page **22**

**Solarimeters** Page **23**



## Dedicated to Food Industry

Thermometers - Hygrometers  
**Class 150**

Page **17**





Interchangeable measurement modules  
Class 200/300



**NEW**

## Airflow meter

Airflow & Air velocity  
**DBM610**

Page **18**

Page **19**

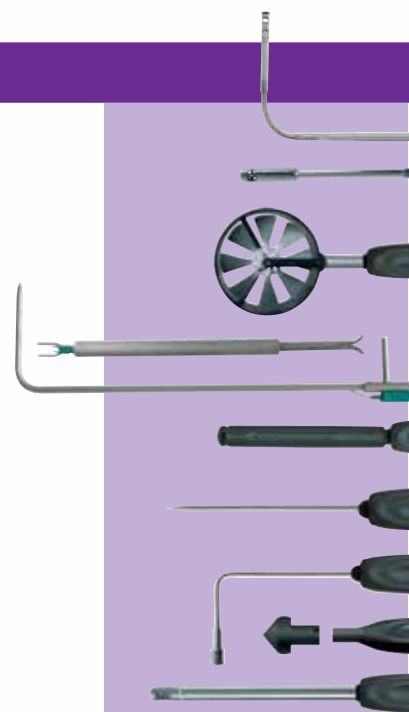
## Software



## Class 300 Multifunction

Pages **14-15**

- Thermometer
- Hygrometer
- Anemometer
- Manometer
- Air quality
- Tachometer





Temperature, delta T, selection of units, hold, max., min., adjustable automatic shut-off and backlight.

### TK100/TK102

Thermocouple K, J, T

- 1 or 2 channels thermometer
- Interchangeable probes



Large choice of temp. probes in option

### TK102

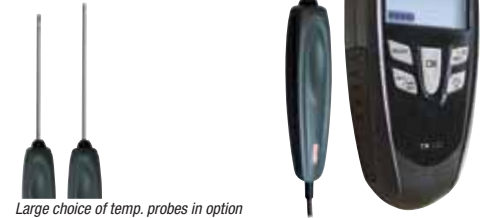
2 channels



### TN100/TN101/TN102

NTC

- 1 or 2 channels thermometer
- One fixed probe or a large choice of interchangeable probes



Large choice of temp. probes in option

### TR100/TR102

PT100

- 1 or 2 channels thermometer
- Interchangeable probes



Large choice of temp. probes in option

## Class 100 & 200 accessories

### Probes

PT100, NTC, Thermocouple K, J, T

#### Interchangeable SMART + probes

Probes automatically recognized when connected to the instrument. (PT100 probes)



Calibration certificate



● Supplied with ● Optional

Current/voltage module

Module with 4 THERMOCOUPLE inputs

Thermocouple K, J, T probe \*

NTC probes \*

NTC penetration probe

PT100 probe \*

PT100 probe \* - wireless -

\*Large choice of temperature probes in option



Temperature, delta T, selection of units, hold, max., min., audible alarm (2 setpoints).



8,000 measurement points.

Range dedicated to Food-Industry  
page 17

**INFRARED**  
Thermometers  
page 16

## Wireless probes



## Interchangeable modules

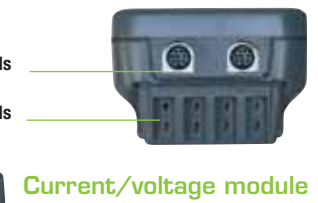
Module with 4 Thermocouple inputs

## TM200

4 Thermocouple inputs  
2 PT100 inputs



Large choice of temperature probes in option



2 PT100 channels

4 Thermocouple K,J,T channels

Current/voltage module



For  $\Delta T$  supervision on air handling system.

Supplied in a transport case



TK100 - TK102  
1 channel 2 channels  
TN100 - TN102  
1 channel 2 channels  
TN101  
TR100 - TR102  
1 channel 2 channels  
TM200

0 to 2.5 V					●
0 to 10 V					
0 to 4-20 mA					
K : -200 to +1300°C					●
J : -100 to +750°C					●
T : -200 to +400°C					●
(Measuring range according to model)	●				●
-40 to +120°C (according to model)		●		●	●
-50 to +250°C (according to model)				●	●

Magnetic protective cover  
Hands-free



Black ball (class 200)  
With connection gland



Datalogger - 10 (class 200)  
Software for data recording and processing.



Wireless connection  
(class 200)



## SERVICE

### Humidity rate monitoring



## CLEAN ROOMS

### Hazardous area control



## HM100

### Pin moisture meter

Indication of humidity percentage for 4 types of different material:

- Hardwood
- Softwood
- Concrete and plaster
- Bricks

**NEW**



Relative humidity, dew point and temperature.  
Selection of units, hold, max., min., adjustable automatic shut-off and backlight.

## HD100 Hygrometry Temperature

- Fixed probe



## Class 100 & 200 accessories

## Probes

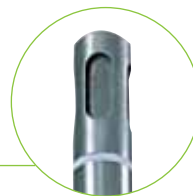
### Hygrometry, temperature



**Wired** **Wireless**



(Pt 100 probes)



High temperature and hygrometry probe  
• From -40 to +180°C



**Wireless**



(Pt 100 probes)



**Calibration certificate**



Supplied with



Optional



Current/voltage module

Module with 4 THERMOCOUPLE inputs

Standard hygrometry probe

Standard hygrometry probe - wireless -

High temperature hygrometry probe

High temperature hygrometry probe

- wireless -

PT100\* temperature probe

PT100 temperature probe - wireless - \*

Thermocouple K, J, T\* probes

\*Large choice of temperature probes in option



Absolute and relative humidity, dew point, surface dew point, temperature and wet temperature, enthalpy, WBGT index, delta T, selection of units, hold, max., min.



8,000 measurement points.

Range dedicated to Food-Industry  
page 17

## HD200

Hygrometry  
PT100

Thermocouple K, J, T



Large choice of temperature probes in option

### Wireless probes



### Interchangeable modules

Module with 4 Thermocouple inputs  
Current/voltage module



### High Temperature Humidity probe

- Stainless steel probe
- Up to 180°C



For all humidity measurement fields.



Supplied in a transport case

HD100

HD200STD

HD200HT

HD200

0 to 2.5 V		●	●	●
0 to 10 V				
0 to 4-20 mA		●	●	●
K : -200 to +1300°C		●	●	●
J : -100 to 750°C		●	●	●
T : -200 to +400°C		●	●	●
3 to 98 %RH	●	●	●	●
0 to 600 g/Kg		●	●	●
-40 to +70°C <sub>td</sub>		●	●	●
-20 to +80°C		●	●	●
3 to 98 %RH		●	●	●
0 to 600 g/Kg		●	●	●
-50 to +80°C <sub>td</sub>		●	●	●
-40 to +180°C		●	●	●
-50 to +250°C (according to model)		●	●	●
(according to model)		●	●	●



Magnetic protective cover  
Hands-free

Necessary for WBGT index calculation



Black ball (class 200)  
With connection gland



Datalogger - 10 (class 200)  
Software for data recording and processing.

Wireless connection  
(class 200)



### LV101

Ø14mm vane

- Velocity • Airflow in ducts and with cones
- Temperature • Fixed probe



### LV107 & LV110

Ø70mm & Ø100mm vane

- Velocity • Airflow calculation • Temperature
- Fixed probe • Detection of airflow direction



### LV120 & LV130

Ø100mm vane

Thermo-anemometer with Ø100mm fixed or rotative vane probe.



**NEW**



Velocity and airflow in ducts and with cones, temperature. Selection of units, hold, max., min., automatic average, adjustable automatic shut-off and backlight.

### VT100

Hotwire

- Velocity
- Airflow calculation with cone
- Temperature
- Velocity compensation with air pressure
- Fixed probe



## Class 100 & 200 accessories

● Supplied with ● Optional

LV120  
LV130

Current/voltage module	0 to 2,5 V 0 to 10 V 0 to 4-20 mA		
Module with 4 THERMOCOUPLE inputs	K : -200 to +1300°C J : -100 to +750°C T : -200 to +400°C		
Standard Hotwire	0,15 to 30 m/s -20 to +80°C		
Telescopic gooseneck-shaped hotwire	0 to 99999 m³/h		
Airflow cones		●	●
Ø14 mm vane	0,8 to 25m/s -20 to +80°C		
Ø14 mm telescopic vane	0 to 99999 m³/h		
Ø70 mm vane	0,3 to 35m/s -20 to +80°C		
Ø70 mm wireless vane	0 to 99999 m³/h		
Ø100 mm vane	0,25 to 35m/s -20 to +80°C	●	●
Ø100 mm wireless vane	0 to 99999 m³/h		
PT100 temperature probe *	-50 to +250°C		
PT100 temperature probe * - wireless -	(according to model)		
Thermocouple K, J, T probe *	(Measuring range according to model)		

## Probes

Ø14mm, Ø70mm and Ø100mm vanes, Hotwire





Velocity and airflow in ducts and with cones, average (point per point, automatic and automatic point per point), K2 factor, temperature, delta T. Selection of units, hold, max. min., Standard deviation.



8,000 measuring points.

**VT200**  
 Vanes  
 Hotwire  
 Temperature



### Hotwire

- Standard or telescopic gooseneck-shaped
- Built-in Pt100 temperature probe

### Airflow at vent outlet



• Airflow cones for hotwire and vane probes :

- 200 x 200 mm
- 300 x 300 mm
- 450 x 450 mm
- 550 x 100 mm

### Wireless probes



Wireless connection



Ø70 mm and Ø100 mm vane and PT100 temperature probes.

### Interchangeable modules

4 inputs Thermocouple module  
 Current/voltage module



LV101	LV107	LV110	VT100	VT200	VT200F	VT200H	VT200L	VT200P	VT200TP	VT200TF
				●	●	●	●	●	●	●
				●	●	●	●	●	●	●
			●	●	●	●	●	●	●	●
●		●	●	●	●	●	●	●	●	●
●				●	●	●	●	●	●	●
	●			●	●	●	●	●	●	●
		●		●	●	●	●	●	●	●
				●	●	●	●	●	●	●
				●	●	●	●	●	●	●
				●	●	●	●	●	●	●
				●	●	●	●	●	●	●



Airflow cones for vane and hotwire probes.

Magnetic protective cover Hands-free

Datalogger - 10 (class 200)  
 Software for data recording and processing.



Wireless connection (class 200)



Supplied in a transport case

Supplied with Calibration certificate

### MP100 & MP101

From 0 to  $\pm 1000$  Pa  
From 0 to  $\pm 1000$  mmH<sub>2</sub>O



Pressure, selection of units, Self-calibration, hold, min., max., adjustable automatic shut-off and backlight.

### MP120

From 0 to  $\pm 1000$  Pa

- Pressure
- Velocity and airflow calculation
- Velocity calculation with air pressure compensation.



### MP105/112

From 0 to  $\pm 500/\pm 2000$  mbar



### MP115

For atmospheric pressure

From 700 to 1100 mbar



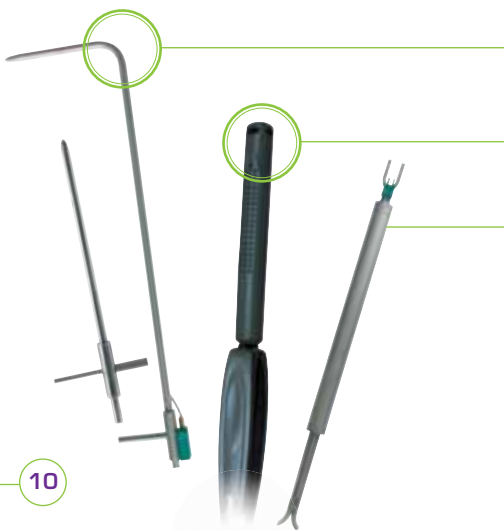
**NEW**



## Class 100 & 200 accessories

### Probes

Pitot Tubes, Thermocouple, CO/temp.



#### Pitot Tubes «L type»

- With or without temperature compensation
- Several diameters and lengths available

#### CO/Temperature probe

- From 0 to 1000 ppm
- PT 100 from -20 to +80°C

#### Pitot Tube «S type»

- Built-in thermocouple temperature probe
- TIG welding and stainless steel sheath.

Wired



Large choice of temperature probes in option



● Supplied with ● Optional

<i>Interchangeable PRESSURE Modules</i>	0 to $\pm 500$ Pa
	0 to $\pm 2500$ Pa
	0 to $\pm 10\,000$ Pa
	0 to $\pm 500$ mBar
	0 to $\pm 2000$ mBar
<i>Current/voltage module</i>	0 to 2,5 V 0 to 10 V 0 to 4-20 mA
<i>Module with 4 THERMOCOUPLE inputs</i>	K : -200 to +1300°C J : -100 to +750°C T : -200 to +400°C
<i>Thermocouple K, J, T probes</i>	(Measuring range according to model)
<i>CO/Temperature probe</i>	-20 to +80°C 0 to 500 ppm
<i>Pitot Tubes 'L' and 'S'</i>	2 to 100 m/s
	Diameter : from $\varnothing 3$ to $\varnothing 14$ mm Length : from 100 mm to 3 m
<i>Airflow DEBIMO blades</i>	4 to 100 m/s 0 to 99999 m <sup>3</sup> /h



## SERVICE



## AGRONOMY



## WINE MAKING



CO<sub>2</sub>, temperature, selection of units, hold, max., min., adjustable automatic shut-off and backlight.



## AQ100

CO<sub>2</sub>  
Temperature

- Fixed probe



# Tachometer



## Rpm indicator

### Contact/Optical

- Fixed probe
- Selection of units
- Function, Hold, max., min.
- Selection of contact or optical
- Adjustable auto-extinction and backlight



● Supplied with ● Optional

Optical probe	From 60 to 60000 rpm
ETC adaptor	From 30 to 20000 rpm

CT1000

CT100C

●	●
●	●

Supplied in a transport case



Calibration certificate

CO, CO<sub>2</sub>, temperature, Delta T, humidity, selection of units, hold, max., min., audible alarm (2 setpoints),...

8,000 measuring points.



## AQ200

CO/CO<sub>2</sub>

Temperature/ Hygrometry  
Air pressure



**NEW**

Omnidirectional probe

## Air quality probes

**CO/Temperature probe**

- From 0 to 500 ppm / From -20 to +80°C

**CO<sub>2</sub>/Temperature probe**

- From 0 to 5000 ppm / From -20 to +80°C

**CO<sub>2</sub>/Temp./Hygrometry probe**

- From 0 to 5000 ppm / From -20 to +80°C / From 5 to 95 %RH



## Interchangeable modules

**Climatic conditions**

- Hygro/Temp./Air pressure

**Module with 4 Thermocouple inputs  
Current/voltage module**



## Wireless probes

**Wireless connection**

PT100 temperature probes



## Accessories

**Magnetic protective cover**...

Hands-free



**Datalogger - 10 (class 200)**

Software for data recording and processing.



**Wireless connection**

(class 200)



Supplied in a transport case



**Calibration certificate**

● Supplied with ● Optional

		AQ100	AQ200	AQ200P	AQ200S	AQ200-O
<i>Climatic conditions module</i>	5 to 95%RH -20 to +80°C 800 to 1100hPa		●	●	●	●
<i>Current/voltage module</i>	0 to 2,5 V 0 to 10 V 0 to 4-20 mA		●	●	●	●
<i>Module with 4 THERMOCOUPLE inputs</i>	K: -200 to +1300°C J: -100 to +750°C T: -200 to +400°C		●	●	●	●
<i>CO/Temperature probe</i>	0 to 500 ppm -20 to +80°C		●	●	●	●
<i>CO<sub>2</sub>/Temperature probe</i>	0 to 5000 ppm -20 to +80°C	●	●	●	●	●
<i>CO<sub>2</sub>/Temp./Hygro probe</i>	0 to 5000 ppm -20 to 80°C 5 to 95%RH		●	●	●	●
<i>PT100 temperature probes*</i>	-50 to +250°C (according to model)		●	●	●	●
<i>PT100 temperature probes-wireless*</i>			●	●	●	●
<i>Thermocouple K, J, T probes*</i>	(Measuring range according to model)		●	●	●	●
<i>Omnidirectional probe air velocity/temperature/hygrometry</i>	0 to 5m/s -20 to 80°C 5 to 95%RH		●	●	●	●

\*Large choice of temperature probes in option

# Multifunction Pressure-Temperature Class

Customize your AMI300 according to your needs.

● Supplied with ● Optional

AMI300  
AMI300CLA  
AMI300STD  
AMI300PRO  
AMI300CRF  
AMI300SRF  
AMI300PRF

<b>Interchangeable PRESSURE modules</b>	0 to ±500 Pa	●	●	●	●	●	●
	0 to ±2500 Pa	●	●	●	●	●	●
	0 to ±10000 Pa	●	●	●	●	●	●
	0 to ±500 mBar	●	●	●	●	●	●
	0 to ±2000 mBar	●	●	●	●	●	●
<b>Current/voltage module</b>	0 to 2,5 V 0 to 10 V 0 to 4-20 mA	●	●	●	●	●	●
<b>Module with 4 THERMOCOUPLE inputs</b>	K : -200 to +1300°C J : -100 to +750°C T : -200 to +400°C	●	●	●	●	●	●
<b>Climatic conditions module</b>	5 to 95 %RH -20 to +80°C 800 to +1100hPa	●	●	●	●	●	●
<b>Pitot Tubes 'L' and 'S'</b> <small>Diameter : from Ø3 to Ø14 mm Length from 100 mm to 3 m</small>	2 to 100m/s	●	●	●	●	●	●
	0 to 99999 m³/h	●	●	●	●	●	●
<b>Optical tachometry probe</b>	60 to 10000 rpm 1001 to 60000 rpm	●	●	●	●	●	●
<b>Contact tachometry probe</b>	30 to 20000 rpm	●	●	●	●	●	●
<b>Standard hotwire</b>	0,15 to 30 m/s -20 to +80°C	●	●	●	●	●	●
<b>Telescopic gooseneck-shaped hotwire</b>	0 to 99999 m³/h	●	●	●	●	●	●
<b>Ø14 mm vane</b>	0,8 to 25m/s -20 to +80°C	●	●	●	●	●	●
<b>Wired telescopic Ø14 mm vane</b>	0 to 99999 m³/h	●	●	●	●	●	●
<b>Ø70 mm vane</b>	0,3 to 35m/s -20 to +80°C	●	●	●	●	●	●
<b>Wireless Ø70 mm vane</b>	0 to 99999 m³/h	●	●	●	●	●	●
<b>Ø100 mm vane</b>	0,25 to 35m/s -20 to +80°C	●	●	●	●	●	●
<b>Wireless Ø100 mm vane</b>	0 to 99999 m³/h	●	●	●	●	●	●
<b>Standard hygrometry probe</b>	3 to 98 %RH -50 to +80°C <sub>air</sub> -20 to +80°C	●	●	●	●	●	●
<b>Wireless standard hygrometry probe</b>	3 to 98 %RH -50 to +80°C <sub>air</sub> -20 to +80°C	●	●	●	●	●	●
<b>High temperature hygrometry probe</b>	3 to 98 %RH -50 to +80°C <sub>air</sub> -40 to +180°C	●	●	●	●	●	●
<b>Wireless high temperature hygrometry probe</b>	3 to 98 %RH -50 to +80°C <sub>air</sub> -40 to +180°C	●	●	●	●	●	●
<b>PT100 temperature probe</b>	-50 to +250°C (according to model)	●	●	●	●	●	●
<b>Wireless PT100 temperature probe</b>	-50 to +250°C (according to model)	●	●	●	●	●	●
<b>Thermocouple K, J, T probes</b>	(Measuring range according to model)	●	●	●	●	●	●
<b>CO/Temperature probe</b>	0 to 500 ppm -20 to +80°C	●	●	●	●	●	●
<b>CO<sub>2</sub>/Temperature probe</b>	0 to 5000 ppm -20 to +80°C	●	●	●	●	●	●
<b>CO<sub>2</sub>/Temp./Hygro probe</b>	0 to 5000 ppm -20 to 80°C 5 to 95%RH	●	●	●	●	●	●
<b>Multifunction probe</b> <i>Velocity/Temperature/Hygrometry</i>	0,15 to 30 m/s -20 to 80°C 5 to 95%RH	●	●	●	●	●	●
<b>Omnidirectional probe</b> <i>air velocity/temperature/hygrometry</i>	0 to 5m/s -20 to 80°C 5 to 95%RH	●	●	●	●	●	●



**Supplied with**  
Calibration certificate in alu transport case.

## AMI300

- Pressure
- Temperature/Hygrometry
- Velocity/Airflow
- Air quality
- Tachometry

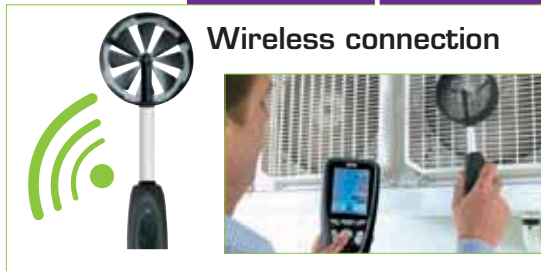


Wireless  Wired 

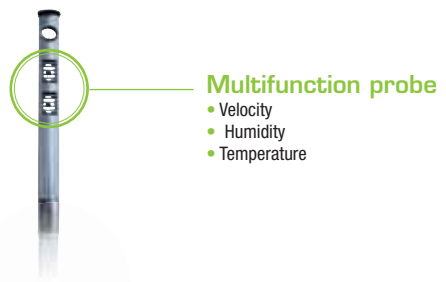
- Up to 12,000 measuring points
- Evolutive and accurate
- Intuitive menu
- Large color display
- Joystick and 5 metal coated keys

### Wireless probes

Wireless connection



### Temperature



- Multifunction probe
- Velocity
  - Humidity
  - Temperature

### Pressure



### Climatic conditions module

- Humidity
- Temperature
- Air pressure



### Air quality



### Humidity



### Velocity and airflow



Wireless communication

# Gas detection

Selection of units, auto hold, max. min.,  
Adjustable automatic shut-off and backlight  
adjustable alarm



## MP130 Gas network sealing



- Manometer for gas network sealing
- Pressure: -200 to +200 mbar
- Sealing kit



Supplied in  
a transport  
case

NEW



## CO detector CO100

- CO detection
- Displaying of ambient temperature
- COmax display



Supplied  
with  
Calibration  
certificate

## Gas leak detector FG100

- Detection of gas such as methane (CH<sub>4</sub>), LPG (isopropanol and isobutane) and others combustible gas (hydrocarbon)
- Display of the concentration of measured gas in ppm, %VOL and %LEL
- Flexible probe with semiconductor gas sensor



# Infrared thermometers

## KIRAY 100 - 200 - 300

Temperature control of surfaces :  
burning hot, dangerous or difficult to access

From -50 to +1,850°C





Selection of units, auto hold, max. min.,  
Adjustable automatic shut-off and backlight  
adjustable alarm



➤ HACCP principle

## Thermometer TK150 Thermocouple K, J, T

- 1 channel Thermometer
- Supplied with IP67 waterproof protective cover



Large choice of temp. probes in option

## Thermometers TN150/TN151 NTC

- 1 channel Thermometer
- Supplied with IP67 waterproof protective cover



Large choice of temp. probes in option

## Thermometer TR150 PT1000

- 1 channel Thermometer
- Supplied with IP67 waterproof protective cover



Large choice of temp. probes in option

## HD150 Hygrometer



- Relative humidity, temperature, dew point
- Fixed probe



Calibration certificate

Transport case



### Waterproof protective cover

● Supplied with ● Optional

Hygrometry probe	<ul style="list-style-type: none"> <li>• 5 to 95%RH</li> <li>• -40 to +70°Ctd</li> <li>• -20 to +70°C</li> </ul>
Thermocouple K, J, T probes *	-50 to +250°C (according to model)
NTC probes *	-40 to +120°C (according to model)
Penetration NTC probes	
PT1000 probes *	-50 to +250°C
IP67 Waterproof protective cover	

TK150 TN150 TN151 TR150 HD150

	●			
		●		
			●	
●	●	●	●	●

\*Large choice of temperature probes in option

# Airflow meter



Velocity and airflow in ducts, pressure, temperature.  
Selection of units, hold, max., min., automatic average,  
adjustable automatic shut-off and backlight.



## DBM610

For airflow commissioning and balancing

**NEW**

Check air volume of your diffusers and grilles.

- Measuring range: from 40 to 3500 m<sup>3</sup>/h or from 24 to 2060 cfm
- Quick and simple hood change
- Simultaneous display of airflow and temperature
- Automatic detection of airflow direction (supply or exhaust)
- Removable measuring unit (thermo-anemo-manometer functions)
- Software for data processing on computer



## Thermo-anemo-manometer functions

- Removable measuring unit
- Measurement of airflow in duct with Pitot Tubes
- Check filters fouling with two silicone tubes



## Accessories



Supplied with  
Calibration certificate



Supplied in a transport case

4 other hoods are available as options:

- 720x720 mm
- 720x1320 mm
- 420x1520 mm
- 1020x1020 mm



Pitot Tubes «L type»

- With or without temperature compensation
- Several diameters and lengths available

## Datalogger - 10

Software for data recording and processing.



# Data processing software



## DATALOGGER-10

Configure

Plan

Data process

Operate

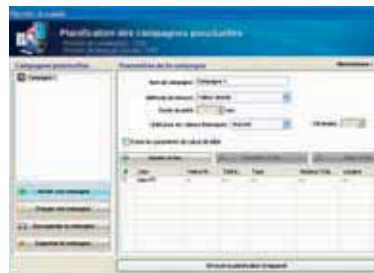
### Instruments configuration

Configure your clients, sites and vent types.



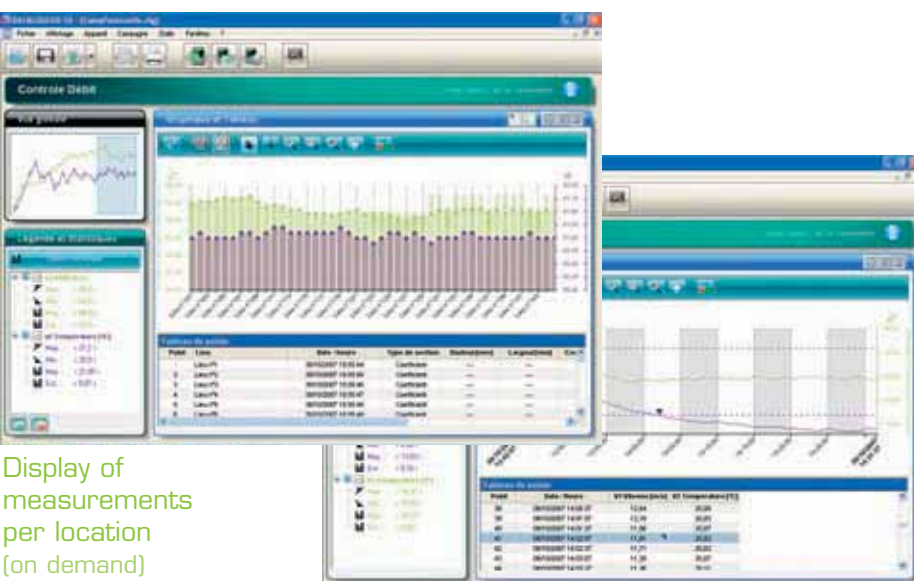
### Intervention planning

Configure sites and specifications of your next measuring dataset.



### Instruments management

Record your instruments and their calibration certificates.



### Dataset processing

- Customized channels
- Insert comments
- Display theoretical values and/or tolerances
- Insert legends and statistics
- Add math functions

dB,  
selection of units, hold, max., min.,  
adjustable automatic shut-off and backlight.



### Standards

As per following standards:  
**NF EN 61672-1 / NF EN 60651 / NF EN 60804**



### DB200

**Sound level meter**  
Integrating-averaging with  
storage function

**Five different measurement modes**

- Conventional sound level meter
- Conventional sound level meter with storage
- Conventional and integrating-averaging sound level meter
- Integrating-averaging sound level meter with storage
- Sound level meter «calculator» of two sound sources

**Measured values**

- Weighted sound level: L
- Equivalent continuous level: Leq
- Sound exposure level: LE
- Peak pressure level: Lpk
- 30 - 130 dB
- Class 2
- X frequency weighting: A - C - Z
- Y frequency weighting: Fast - Slow - Impulse - Peak



**Supplied with  
calibration certificate**



Supplied in a  
transport case



### DB100

- 30 - 130 dB
- Frequency weighting: A
- Sound-pressure level
- Time averaged sound level



## Class 100 & 200 accessories

**LDB200 (class 200)**  
Software for display data and  
measurement report printing



**CAL200 (class 200)**  
94 dB calibrator

**CTL100 (class 100)**  
Sound controller  
90 dB at 1000 Hz



dB  
selection of units, hold, max., min.,  
adjustable automatic shut-off and backlight.



## DS200

### Individual noise dosimeter

Sound pressure level: LAF – LAS – max-min  
Equivalent continuous level: LAeq – LCEq – max – min  
Peak pressure level: LCpk – LZpk  
Detection and peak counting: 135dB – 137dB – 140dB  
Daily sound exposure level: Lex,d  
Sound exposure: EA,T : en Pa²h  
DOSE

**NEW**



Calibration certificate

## Standards

As per following standards:  
**NF EN ISO 9612 / NF S 31-084  
and 2003/10/CE**

## DS300

### Individual noise dosimeter with two channel measurement

- Only one dynamic range extended from 100 dB : 40-140 dB
- Conventional and integrating-averaging sound level meter mode
- Two-channel measurement
- Audio-recording on exceeding thresholds, peaks or short LAeq

**Measured values**

- Sound pressure level: LAF – LAS – max-min
- Equivalent continuous level: LAeq – LCEq – LXEq - octave bandes 63 Hz/8 kHz
- Detection and peak counting: 135dB – 137dB – 140dB
- Daily sound exposure level: Lex,d
- Sound exposure: EA,T : en Pa²h
- DOSE

**NEW**



## Class 200 & 300 accessories



**D-MB**  
microphone direct



**LDS300 (class 200 & 300)**  
LDS300 data processing software allows an elaborated management of data and a presentation of results according to the used measurement methodology.

### Standards

As per following standards:  
**NF EN 12464-1 / NF EN 12464-2 / NF EN 12193**



lux, fc  
 selection of units, hold, max., min.,  
 adjustable automatic shut-off and backlight.

### LX100

- From 0.1 to 150 000 lux
- From 0.01 to 13 940 fc
- Instantaneous measurement
- Timed measurement
- Relative illuminance function
- Hold function



### LX200

#### Illuminance measurement

- From 0.1 to 200 000 lux
- From 0 to 18 585 fc
- Instantaneous illuminance
- Relative illuminance
- Evolution of illuminance according to weather conditions
- Cartography of illuminance
- Uniformity
- Supplied with LLX200 software



#### LLX200 (class 200)

Operating software for data processing and printing of reports.



Supplied in a transport case



W/m<sup>2</sup>, Wh/m<sup>2</sup>,  
selection of units, hold, max., min.,  
adjustable automatic shut-off and backlight.



## SL100

- From 1 W/m<sup>2</sup> to 1300 W/m<sup>2</sup>
- From 1 Wh/m<sup>2</sup> to 500 Wh/m<sup>2</sup>
- Measurement and spot check of solar power



## SL200

### Solarimeter / Pyranometer

- From 1 W/m<sup>2</sup> to 1300 W/m<sup>2</sup>
- From 1 Wh/m<sup>2</sup> to 500 Wh/m<sup>2</sup>
- Measurement and spot check of solar irrigation (instantaneous, average, time-recording)
- Calculation of energetic exposure in Wh/m<sup>2</sup>
- Storage and saving of average values of power and updating the energetic exposure calculation every minutes
- Recorded datas can be read on the display, and the graphic function allows a fast interpretation of the measure file

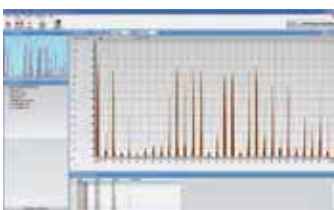


Supplied with  
Calibration certificate



Supplied in a transport case

## Class 100 & 200 accessories



### LSL200 (class 200)

LSL 200 is a configuration, recovery and data processing software of stored data in the instrument.



Fixing kit  
For solar panels

Tripod  
For SL100 and SL200





Distributed by:



[www.kimo.fr](http://www.kimo.fr)



**KIMO** - Export Department  
Boulevard de Beaubourg - BP 48  
Emerainville - F-77312 MARNE LA VALLEE Cedex 2 - France  
Tel.: +33 1 60 06 69 25 - Fax: +33 1 60 06 69 29  
Email: [export@kimo.fr](mailto:export@kimo.fr)