



Range of roof mounted axial flow fans, with vertical air discharge configuration, for air extract.

Casing formed from rolled sheet steel welded on the base with a corrosion resistant hot dipped galvanized finish. High grade die-cast aluminum blades locked within a pressed sheet steel hub. Backdraft shutter and bird proof outlet. Cylindrical casing formed from rolled sheet steel protected against corrosion by grey polyester paint coating.

**Motors**

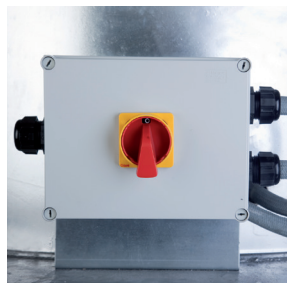
- HGTT-V: Three-phase 4 pole motors, IP55, class F insulation:
  - 220-240/380-415V-50Hz up to 3 kW
  - 380-415V-50Hz, for higher power motors and two speed motors.
- (See characteristics chart).
- Electrical isolator fitted to fan casing.

**Additional information**

Standard air direction: form (A) configuration (Motor over impeller).

**On request**

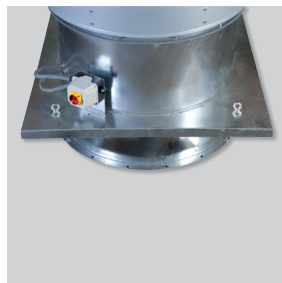
- 6 pole motors.
- 2 speed motors 4/6 and 4/8 poles.



**Isolator**  
Electrical isolator.



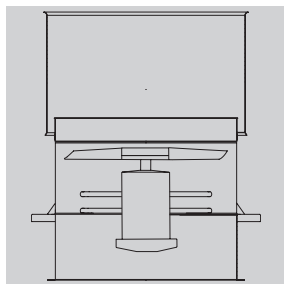
**Outlet guard**  
Outlet guard protection.



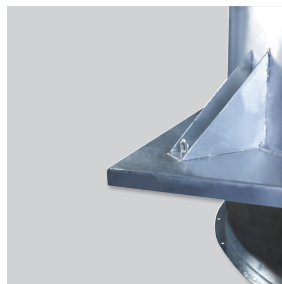
**Support base**  
Base for roof installation.



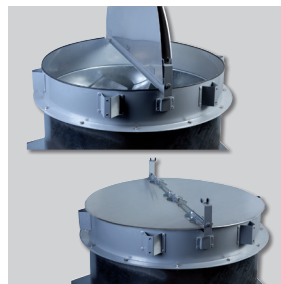
**Inlet flange**  
Flange for duct connection or bellmouth inlet.



**Form (A) configuration**  
Standard air direction: form (A) configuration (Motor over impeller).



**Web support**  
To strengthen base support. Model 1250 only.



**Back draft shutter**  
Prevent back draft of air and entrance of rain water when the fan is switched off.

## TECHNICAL CHARACTERISTICS

Before installation check that the product electrical characteristics listed on the data plate label (voltage, power, frequency, etc.) match those of the intended electrical supply.

### TECHNICAL CHARACTERISTICS - 4 POLES

Model	Diameter (mm)	Motor power	Full load current at 400V (A)	Weight (kg)
HGTT-V/4-800-6/-1,5	800	1,5	3,15	167
HGTT-V/4-800-6/-2,2	800	2,2	4,56	174
HGTT-V/4-800-6/-3	800	3	6,15	180
HGTT-V/4-800-6/-4	800	4	8,2	181
HGTT-V/4-800-6/-5,5	800	5,5	10,3	210
HGTT-V/4-800-6/-7,5	800	7,5	13,9	217
HGTT-V/4-800-9/-4	800	4	8,2	186
HGTT-V/4-800-9/-5,5	800	5,5	10,3	215
HGTT-V/4-800-9/-7,5	800	7,5	13,9	222
HGTT-V/4-900-6/-4	900	4	8,2	223
HGTT-V/4-900-6/-5,5	900	5,5	10,3	252
HGTT-V/4-900-6/-7,5	900	7,5	13,9	259
HGTT-V/4-900-6/-11	900	11	20,7	312
HGTT-V/4-900-6/-15	900	15	28,4	334
HGTT-V/4-900-9/-5,5	900	5,5	10,3	258
HGTT-V/4-900-9/-7,5	900	7,5	13,9	265
HGTT-V/4-900-9/-11	900	11	20,7	318
HGTT-V/4-900-9/-15	900	15	28,4	340
HGTT-V/4-1000-6/-4	1000	4	8,2	238
HGTT-V/4-1000-6/-5,5	1000	5,5	10,3	267
HGTT-V/4-1000-6/-7,5	1000	7,5	13,9	274
HGTT-V/4-1000-6/-11	1000	11	20,7	327
HGTT-V/4-1000-6/-15	1000	15	28,4	349
HGTT-V/4-1000-6/-18,5	1000	18,5	34,9	381
HGTT-V/4-1000-6/-22	1000	22	40,9	402

Model	Diameter (mm)	Motor power	Full load current at 400V (A)	Weight (kg)
HGTT-V/4-1000-9/-5,5	1000	5,5	10,3	274
HGTT-V/4-1000-9/-7,5	1000	7,5	13,9	281
HGTT-V/4-1000-9/-11	1000	11	20,7	334
HGTT-V/4-1000-9/-15	1000	15	28,4	356
HGTT-V/4-1000-9/-18,5	1000	18,5	34,9	388
HGTT-V/4-1000-9/-22	1000	22	40,9	409
HGTT-V/4-1250-6/-15	1250	15	28,4	473
HGTT-V/4-1250-6/-18,5	1250	18,5	34,9	505
HGTT-V/4-1250-6/-22	1250	22	40,9	526
HGTT-V/4-1250-6/-30	1250	30	54,6	574
HGTT-V/4-1250-6/-37	1250	37	65,6	720
HGTT-V/4-1250-6/-45	1250	45	79,4	748
HGTT-V/4-1250-9/-15	1250	15	28,4	483
HGTT-V/4-1250-9/-18,5	1250	18,5	34,9	515
HGTT-V/4-1250-9/-22	1250	22	40,9	536
HGTT-V/4-1250-9/-30	1250	30	54,6	584
HGTT-V/4-1250-9/-37	1250	37	65,6	730
HGTT-V/4-1250-9/-45	1250	45	79,4	758

### TECHNICAL CHARACTERISTICS - 4/8 POLES

Model	Diameter (mm)	Motor power		Full load current 400V (A)		Weight (kg)
		HS	LS	HS	LS	
HGTT-V/4/8-800-6/-1,7/0,35	800	1,7	0,35	4	1,6	163
HGTT-V/4/8-800-6/-2,3/0,5	800	2,3	0,5	5,2	1,9	167
HGTT-V/4/8-800-6/-3/0,65	800	3	0,65	6,8	2,5	173
HGTT-V/4/8-800-6/-4/0,75	800	4	0,75	8,7	3,5	184
HGTT-V/4/8-800-6/-5/1	800	5	1	9,9	3,3	195
HGTT-V/4/8-800-6/-6,8/1,4	800	6,8	1,4	13,7	5,1	206
HGTT-V/4/8-800-6/-8,4/2,05	800	8,4	2,05	16,6	6,2	222

Model	Diameter (mm)	Motor power		Full load current 400V (A)		Weight (kg)
		HS	LS	HS	LS	
HGTT-V/4/8-800-9/-3/0,65	800	3	0,65	6,8	2,5	178
HGTT-V/4/8-800-9/-4/0,75	800	4	0,75	8,7	3,5	189
HGTT-V/4/8-800-9/-5/1	800	5	1	9,9	3,3	200
HGTT-V/4/8-800-9/-6,8/1,4	800	6,8	1,4	13,7	5,1	211
HGTT-V/4/8-800-9/-8,4/2,05	800	8,4	2,05	16,6	6,2	227

### TECHNICAL CHARACTERISTICS - 4/8 POLES

Model	Diameter (mm)	Motor power		Full load current 400V (A)		Weight (kg)
		HS	LS	HS	LS	
HGTT-V/4/8-900-6/-3/0,65	900	3	0,65	6,8	2,5	215
HGTT-V/4/8-900-6/-4/0,75	900	4	0,75	8,7	3,5	226
HGTT-V/4/8-900-6/-5/1	900	5	1	9,9	3,3	237
HGTT-V/4/8-900-6/-6,8/1,4	900	6,8	1,4	13,7	5,1	248
HGTT-V/4/8-900-6/-8,4/2,05	900	8,4	2,05	16,6	6,2	264
HGTT-V/4/8-900-6/-10,5/2,2	900	10,5	2,2	21	7,4	283
HGTT-V/4/8-900-6/-15,5/2,7	900	15,5	2,7	30	9,5	306
HGTT-V/4/8-900-9/-4/0,75	900	4	0,75	8,7	3,5	232
HGTT-V/4/8-900-9/-5/1	900	5	1	9,9	3,3	243
HGTT-V/4/8-900-9/-6,8/1,4	900	6,8	1,4	13,7	5,1	254
HGTT-V/4/8-900-9/-8,4/2,05	900	8,4	2,05	16,6	6,2	270
HGTT-V/4/8-900-9/-10,5/2,2	900	10,5	2,2	21	7,4	289
HGTT-V/4/8-900-9/-15,5/2,7	900	15,5	2,7	30	9,5	312
HGTT-V/4/8-1000-6/-4/0,75	1000	4	0,75	8,7	3,5	241
HGTT-V/4/8-1000-6/-5/1	1000	5	1	9,9	3,3	252
HGTT-V/4/8-1000-6/-6,8/1,4	1000	6,8	1,4	13,7	5,1	263
HGTT-V/4/8-1000-6/-8,4/2,05	1000	8,4	2,05	16,6	6,2	279
HGTT-V/4/8-1000-6/-10,5/2,2	1000	10,5	2,2	21	7,4	298
HGTT-V/4/8-1000-6/-15,5/2,7	1000	15,5	2,7	30	9,5	321
HGTT-V/4/8-1000-6/-17/3,4	1000	17	3,4	33	11	341
HGTT-V/4/8-1000-6/-22/4,4	1000	22	4,4	43	15	365

Model	Diameter (mm)	Motor power		Full load current 400V (A)		Weight (kg)
		HS	LS	HS	LS	
HGTT-V/4/8-1000-9/-6,8/1,4	1000	6,8	1,4	13,7	5,1	270
HGTT-V/4/8-1000-9/-8,4/2,05	1000	8,4	2,05	16,6	6,2	286
HGTT-V/4/8-1000-9/-10,5/2,2	1000	10,5	2,2	21	7,4	305
HGTT-V/4/8-1000-9/-15,5/2,7	1000	15,5	2,7	30	9,5	328
HGTT-V/4/8-1000-9/-17/3,4	1000	17	3,4	33	11	348
HGTT-V/4/8-1000-9/-22/4,4	1000	22	4,4	43	15	372
HGTT-V/4/8-1250-6/-10,5/2,2	1250	10,5	2,2	21	7,4	422
HGTT-V/4/8-1250-6/-15,5/2,7	1250	15,5	2,7	30	9,5	445
HGTT-V/4/8-1250-6/-17/3,4	1250	17	3,4	33	11	465
HGTT-V/4/8-1250-6/-22/4,4	1250	22	4,4	43	15	489
HGTT-V/4/8-1250-6/-33/8	1250	33	8	61	21	533
HGTT-V/4/8-1250-6/-42/10	1250	42	10	85	27	593
HGTT-V/4/8-1250-9/-15,5/2,7	1250	15,5	2,7	30	9,5	455
HGTT-V/4/8-1250-9/-17/3,4	1250	17	3,4	33	11	475
HGTT-V/4/8-1250-9/-22/4,4	1250	22	4,4	43	15	499
HGTT-V/4/8-1250-9/-33/8	1250	33	8	61	21	543
HGTT-V/4/8-1250-9/-42/10	1250	42	10	85	27	603
HGTT-V/4/8-1250-9/-50/11	1250	50	11	91	28	603

### TECHNICAL CHARACTERISTICS - 4/6 POLES

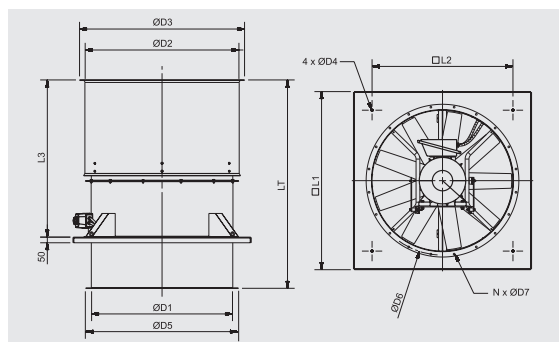
Model	Diameter (mm)	Motor power		Full load current 400V (A)		Weight (kg)
		HS	LS	HS	LS	
HGTT-V/4/6-800-6/-1,5/0,45	800	1,5	0,45	3,5	1,6	163
HGTT-V/4/6-800-6/-2,5/0,8	800	2,5	0,8	5,5	2,5	170
HGTT-V/4/6-800-6/-3/1	800	3	1	6,85	3,86	193
HGTT-V/4/6-800-6/-4,5/1,5	800	4,5	1,5	9,2	5,1	195
HGTT-V/4/6-800-6/-6/2	800	6	2	12	5,6	206
HGTT-V/4/6-800-9/-4,5/1,5	800	4,5	1,5	9,2	5,1	200
HGTT-V/4/6-800-9/-6/2	800	6	2	12	5,6	211
HGTT-V/4/6-900-6/-3/1	900	3	1	6,85	3,86	235
HGTT-V/4/6-900-6/-4,5/1,5	900	4,5	1,5	9,2	5,1	237
HGTT-V/4/6-900-6/-6/2	900	6	2	12	5,6	248
HGTT-V/4/6-900-6/-10,5/3,5	900	10,5	3,5	21	8,6	282
HGTT-V/4/6-900-6/-14/4,5	900	14	4,5	28	11	306

Model	Diameter (mm)	Motor power		Full load current 400V (A)		Weight (kg)
		HS	LS	HS	LS	
HGTT-V/4/6-900-9/-4,5/1,5	900	4,5	1,5	9,2	5,1	243
HGTT-V/4/6-900-9/-6/2	900	6	2	12	5,6	254
HGTT-V/4/6-900-9/-10,5/3,5	900	10,5	3,5	21	8,6	288
HGTT-V/4/6-900-9/-14/4,5	900	14	4,5	28	11	312
HGTT-V/4/6-1000-6/-4,5/1,5	1000	4,5	1,5	9,2	5,1	252
HGTT-V/4/6-1000-6/-6/2	1000	6	2	12	5,6	263
HGTT-V/4/6-1000-6/-10,5/3,5	1000	10,5	3,5	21	8,6	297
HGTT-V/4/6-1000-6/-14/4,5	1000	14	4,5	28	11	321
HGTT-V/4/6-1000-6/-16/5	1000	16	5	31	12,5	335
HGTT-V/4/6-1000-6/-20/6,5	1000	20	6,5	39	16	363

## TECHNICAL CHARACTERISTICS - 4/6 POLES

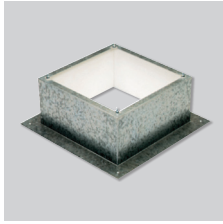
Model	Diameter (mm)	Motor power		Full load current 400V (A)		Weight (kg)
		HS	LS	HS	LS	
HGTT-V/4/6-1000-9/-6/2	1000	6	2	12	5,6	270
HGTT-V/4/6-1000-9/-10,5/3,5	1000	10,5	3,5	21	8,6	304
HGTT-V/4/6-1000-9/-14/4,5	1000	14	4,5	28	11	328
HGTT-V/4/6-1000-9/-16/5	1000	16	5	31	12,5	342
HGTT-V/4/6-1000-9/-20/6,5	1000	20	6,5	39	16	370
HGTT-V/4/6-1250-6/-10,5/3,5	1250	10,5	3,5	21	8,6	421
HGTT-V/4/6-1250-6/-14/4,5	1250	14	4,5	28	11	445
HGTT-V/4/6-1250-6/-16/5	1250	16	5	31	12,5	459
HGTT-V/4/6-1250-6/-20/6,5	1250	20	6,5	39	16	487
HGTT-V/4/6-1250-6/-23/7,2	1250	23	7,2	43	15	503
HGTT-V/4/6-1250-6/-30/9	1250	30	9	54	18,2	528
HGTT-V/4/6-1250-6/-34/11	1250	34	11	60	21	553
HGTT-V/4/6-1250-6/-42/14	1250	42	14	75	27	583
HGTT-V/4/6-1250-9/-14/4,5	1250	14	4,5	28	11	455
HGTT-V/4/6-1250-9/-16/5	1250	16	5	31	12,5	469
HGTT-V/4/6-1250-9/-20/6,5	1250	20	6,5	39	16	497
HGTT-V/4/6-1250-9/-23/7,2	1250	23	7,2	43	15	513
HGTT-V/4/6-1250-9/-30/9	1250	30	9	54	18,2	538
HGTT-V/4/6-1250-9/-34/11	1250	34	11	60	21	563
HGTT-V/4/6-1250-9/-42/14	1250	42	14	75	27	593

## DIMENSIONS (mm)



HGTT-V	D1	D2	D3	D4	D5	D6	D7	N	L1	L2	L3	LT
800	800	912	1012	14	890	860	12	16	1100	840	1015	1198
900	900	1013	1113	14	1005	970	15	16	1250	950	1135	1463
1000	1000	1113	1213	14	1105	1070	15	16	1270	950	1215	1543
1250	1250	1364	1464	16	1355	1320	15	20	1580	1250	1394	1848

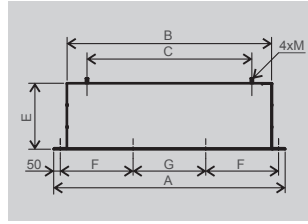
## MOUNTING ACCESSORIES



### JBS -V

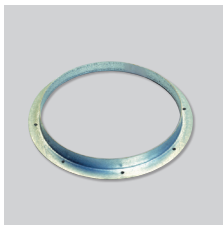
#### Flat roof up stand

- For mounting a fan on a flat roof without up stands.
- For use on horizontal roofs.
- Internal insulation to prevent condensation.
- Supplied with screws and gasket for a complete weather seal.



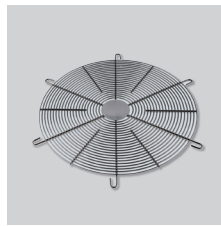
	A	B	C	E	F	G	M
JBS-V-800	1279	1079	840	300	393	393	M12
JBS-V-900	1430	1230	950	400	443	444	M12
JBS-V-1000	1447	1247	950	400	449	449	M12
JBS-V-1250	1755	1555	1250	500	552	551	M16

Model	Matching flange	Inlet bellmouth	Flexible connector	Inlet guard	Circular sound attenuator	Attenuator with acoustic pod
800	ARO BRIDA TGT/ THGT- 800 N	EMB- 800T	ACOPEL F400-800/300 N	DEF.ASP.TGT/THGT- 800	SIL CZ 800	SIL CZO 800
900	ARO BRIDA TGT/ THGT- 900 N	EMB- 900T	ACOPEL F400-900/300 N	DEF.ASP.TGT/THGT- 900	SIL CZ 900	SIL CZO 900
1000	ARO BRIDA TGT/ THGT- 1000 N	EMB- 1000T	ACOPEL F400-1000/300 N	DEF.ASP.TGT/THGT- 1000	SIL CZ 1000	SIL CZO 1000
1250	ARO BRIDA TGT/ THGT- 1250 N	EMB- 1250T	ACOPEL F400-1250/300 N	DEF.ASP.TGT/THGT- 1250	SIL CZ 1250	SIL CZO 1250



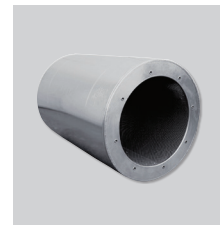
### ARO BRIDA TGT/THGT N

Matching flange.



### DEF.ASP.TGT/THGT

Inlet guard.



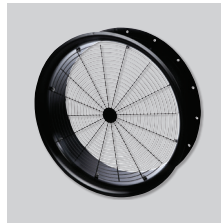
### SIL CZ

Circular silencer.



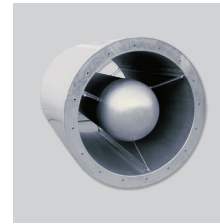
### ACOPEL F400 N

Flexible connection.



### EMB

Bellmouth with guard.



### SIL CZO

Circular silencer with pod.

For more information see Mounting accessories.