

TD-SILENT RANGE

Shhhhhhhhhhh! Here there is silence.



New **TD-1300/250 SILENT** and **TD-2000/315 SILENT**,
extension to range of **TD-SILENT**.
The quietest fans in the world in their class.

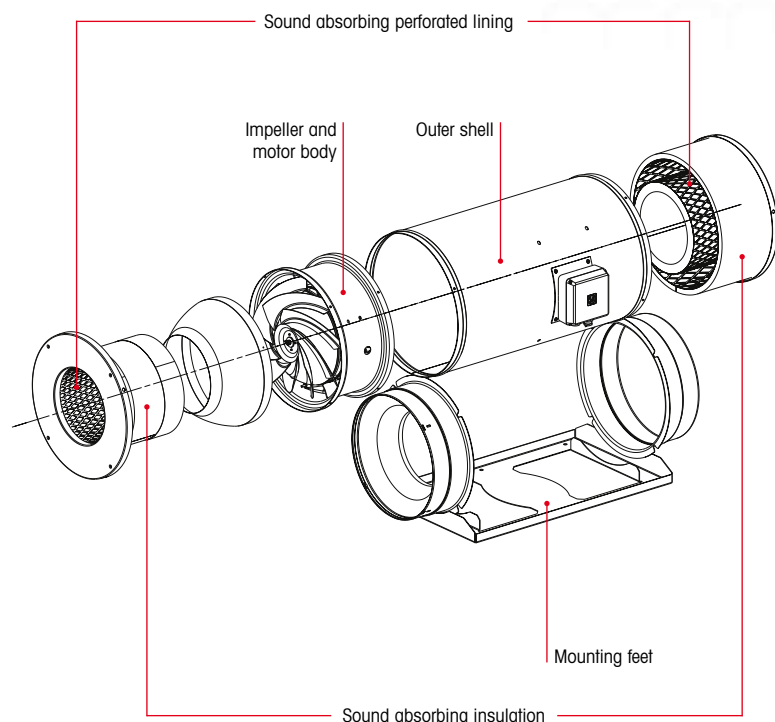
TD-SILENT range: A leap in time.



S&P, a world leader in ventilation, introduces their new models to the range of the world's most quiet, in-line fan, in its class.

Install TD-SILENT and your costumers will hear the difference

Install quietness, install quality of life, with TD-SILENT fans, your customers will feel the satisfaction that the ventilation system does not interfere with their daily tasks.



These new models complete the range of **TD-SILENT**. They reflect our investment in design and technology, to **continue innovating new products**, thus reinforcing **our market leadership**.

The **TD-1300/250 SILENT**, and **TD-2000/315 SILENT** retain the same philosophy; to improve comfort, whilst achieving a **substantial reduction in radiated noise level**, without sacrificing **airflow performance, and ease of installation**.

Due to their size, these models are constructed in sheet steel to give **greater compactness and strength**.

Low profile - Compact



Low profile fans TD-1300/250 SILENT and TD-2000/315 SILENT are ideal for installations where space is very small, as in false ceilings.

Easy maintenance

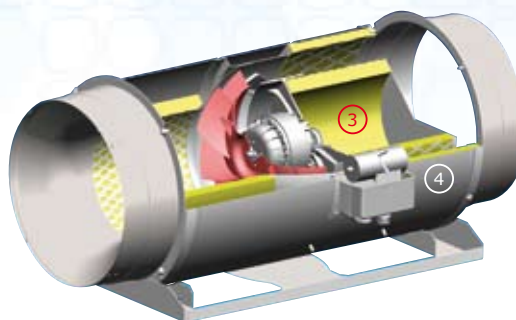


Detachable fan unit for maintenance, or cleaning, without demounting duct connections.

Low noise level



- ① Aerodynamic inlet to improve air flow and reduce sound.
- ② Attenuating perforated skin.



The sound inside the TD-SILENT is attenuated by the acoustic insulation ③ and the external skin ④

Support bracket



Suitable for wall or ceiling mounting.
Fixing brackets to the motor-body included.

IP55 remote terminal box



Easy installation and connection.



In line mixed flow fans with low profile to meet ventilation needs in domestic, commercial, and industrial applications, especially where sound may be a problem.

Constructed from sheet steel with epoxy polyester paint, acoustic insulation (MO) glass fibre, within

outer shell. External terminal box IP55. Removeable fan body with 2 speed motor, single phase 230V-50/60Hz speed controlable, IP44, Class F, external rota aluminium motor with capacitor and thermal protection.

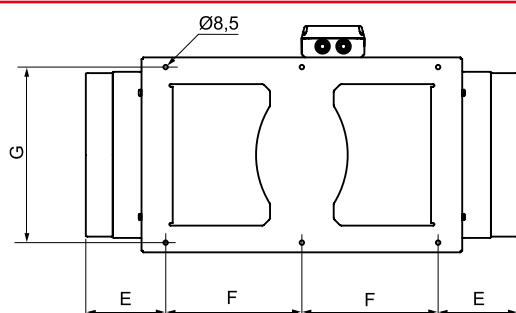
Technical Characteristics (at 230V-50Hz)

| Model | Nom. speed (r.p.m.) | | Maximum absorbed power at 0Pa. (W) | Maximum absorbed current (A) | Duty at free discharge (m³/h) | Sound pressure level* (dB(A)) | | | Weight (Kg) |
|--------------------|---------------------|------|------------------------------------|------------------------------|-------------------------------|-------------------------------|----------|-----------|-------------|
| | | | | | | Inlet | Radiated | Discharge | |
| TD-1300/250 SILENT | HS | 2570 | 197 | 0,83 | 1270 | 47 | 35 | 53 | 20,0 |
| | LS | 2190 | 145 | 0,61 | 1070 | 42 | 31 | 49 | |
| TD-2000/315 SILENT | HS | 2680 | 297 | 1,28 | 1770 | 50 | 39 | 55 | 25,0 |
| | LS | 2300 | 191 | 0,79 | 1500 | 44 | 33 | 48 | |

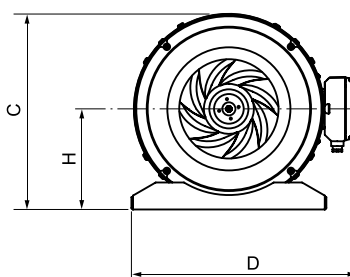
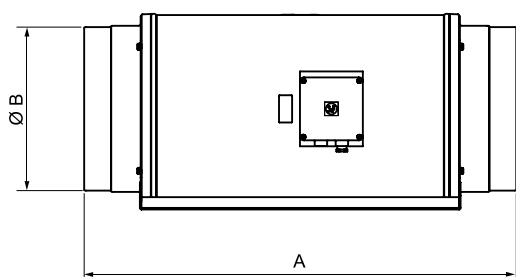
* Sound pressure level at 3 metres in free field conditions at points B & E on curves.

HS: High Speed LS: Low Speed

Dimensions (mm)

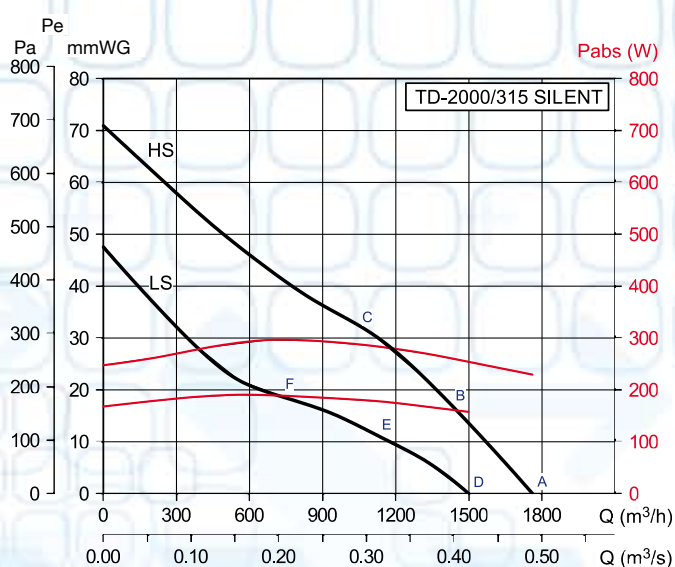
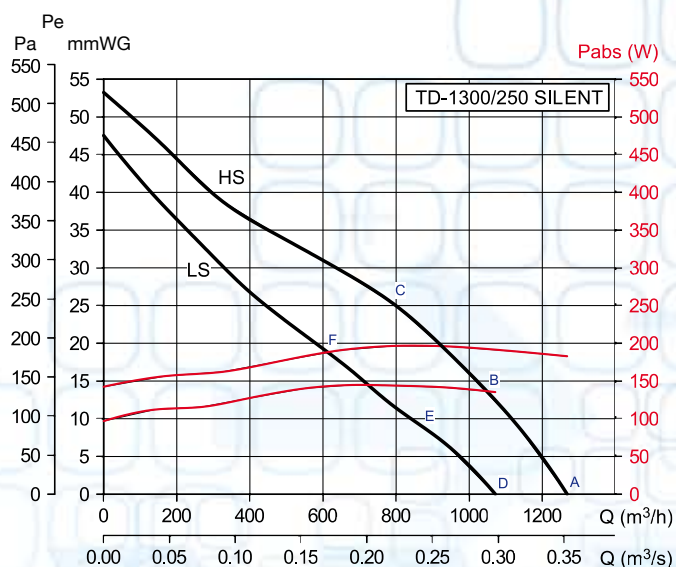


| | A | B | C | D | E | F | G | H |
|--------------------|-----|-----|-----|-----|-----|-----|-----|-----|
| TD-1300/250 SILENT | 680 | 248 | 331 | 387 | 140 | 200 | 280 | 171 |
| TD-2000/315 SILENT | 825 | 312 | 373 | 432 | 152 | 260 | 335 | 192 |



Performance curves

- Air volume in m³/h and m³/s
- Static pressure in mmWG and Pa
- Absorbed power in W
- Air flow data in accordance with the following standards: ISO 5801 and AMCA 210-99



Acoustic characteristics

Sound power levels dB(A) at octave bands for inlet, discharge, and radiated, for low (A or D), medium (B or E) and high (C or F) pressure, for each model. Test in accordance with ISO 13347-3 2004.

| TD-1300/250 SILENT | | 63 | 125 | 250 | 500 | 1000 | 2000 | 4000 | 8000 | LwA |
|--------------------|---|----|-----|-----|-----|------|------|------|------|-----|
| INLET HS | A | 30 | 42 | 60 | 59 | 62 | 61 | 58 | 52 | 67 |
| | B | 32 | 43 | 62 | 60 | 61 | 60 | 56 | 51 | 67 |
| | C | 36 | 47 | 63 | 60 | 58 | 58 | 55 | 48 | 67 |
| DISCHARGE HS | A | 33 | 45 | 60 | 68 | 72 | 65 | 54 | 48 | 74 |
| | B | 30 | 46 | 61 | 69 | 71 | 63 | 52 | 47 | 74 |
| | C | 32 | 51 | 62 | 69 | 67 | 60 | 51 | 44 | 72 |
| RADIATED HS | A | 26 | 31 | 46 | 42 | 55 | 48 | 39 | 38 | 57 |
| | B | 28 | 32 | 48 | 43 | 54 | 47 | 37 | 37 | 56 |
| | C | 32 | 36 | 49 | 43 | 51 | 45 | 36 | 34 | 54 |
| INLET LS | D | 30 | 40 | 59 | 55 | 59 | 57 | 53 | 47 | 64 |
| | E | 35 | 40 | 57 | 56 | 56 | 55 | 51 | 46 | 63 |
| | F | 38 | 45 | 59 | 57 | 53 | 53 | 49 | 42 | 63 |
| DISCHARGE LS | D | 30 | 43 | 58 | 63 | 72 | 59 | 50 | 43 | 73 |
| | E | 29 | 44 | 57 | 65 | 66 | 57 | 47 | 41 | 69 |
| | F | 32 | 48 | 59 | 65 | 62 | 55 | 45 | 38 | 68 |
| RADIATED LS | D | 24 | 32 | 44 | 39 | 53 | 44 | 34 | 33 | 54 |
| | E | 29 | 32 | 42 | 40 | 50 | 42 | 32 | 32 | 52 |
| | F | 32 | 37 | 44 | 41 | 47 | 40 | 30 | 28 | 50 |

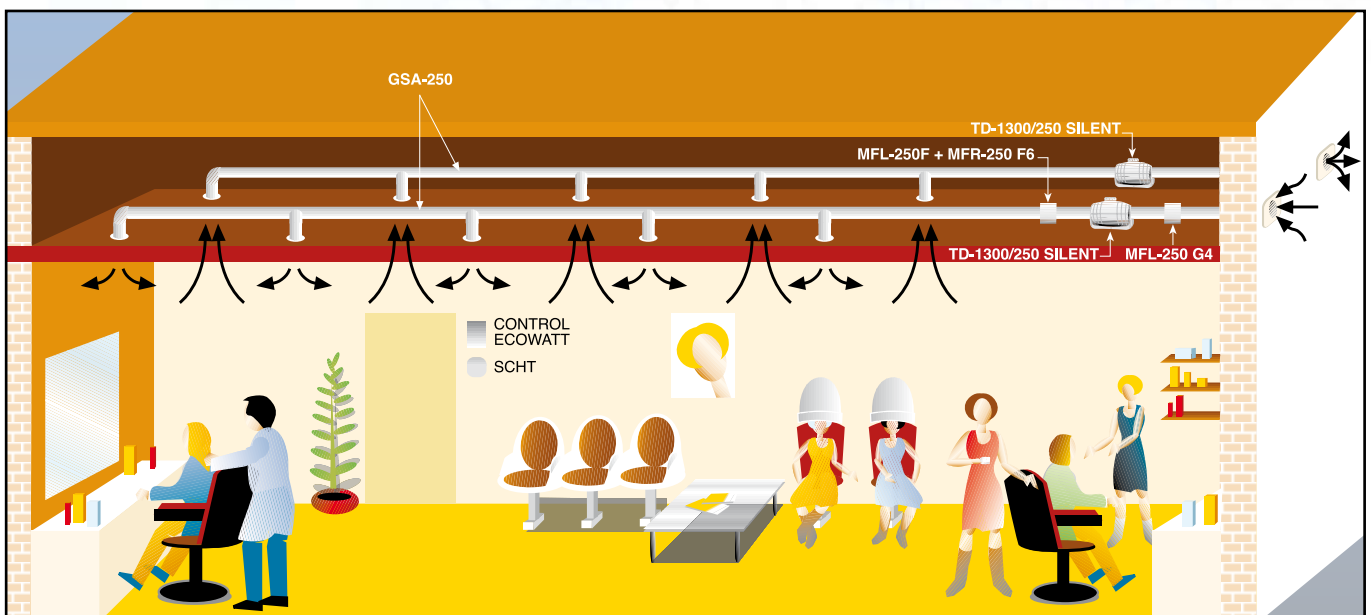
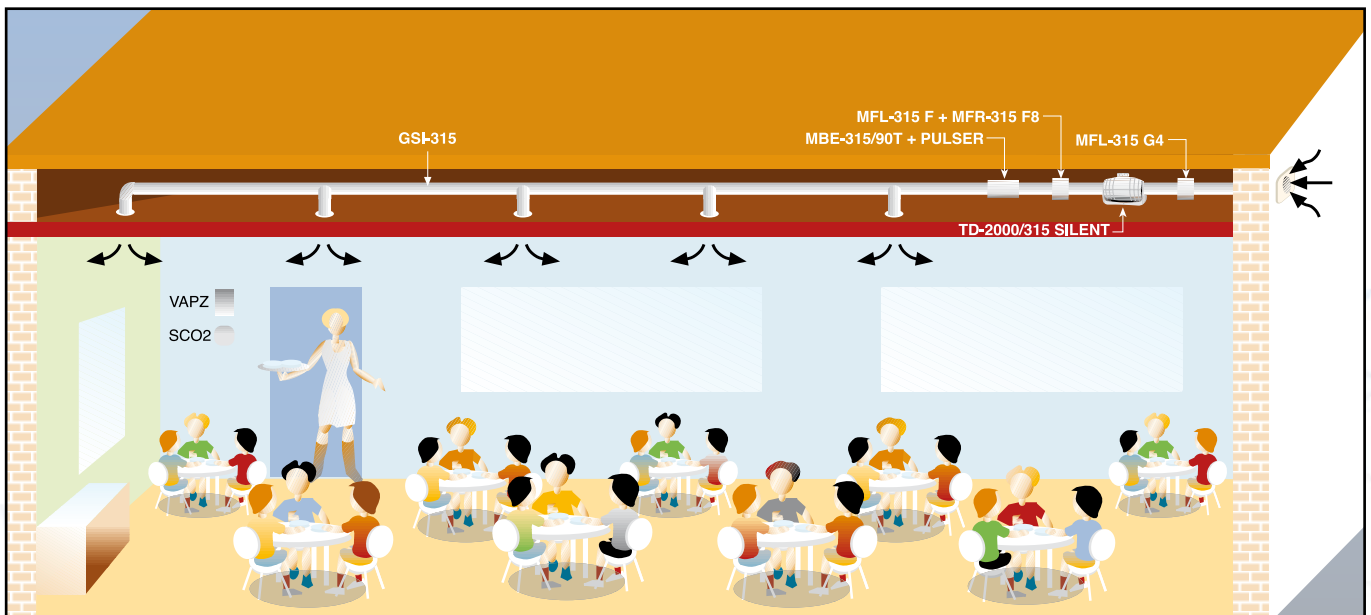
VR: High Speed VL: Low Speed

| TD-2000/315 SILENT | | 63 | 125 | 250 | 500 | 1000 | 2000 | 4000 | 8000 | LwA |
|--------------------|---|----|-----|-----|-----|------|------|------|------|-----|
| INLET HS | A | 34 | 48 | 60 | 63 | 66 | 64 | 59 | 55 | 70 |
| | B | 34 | 49 | 63 | 62 | 65 | 64 | 60 | 55 | 70 |
| | C | 37 | 56 | 64 | 63 | 63 | 62 | 58 | 52 | 70 |
| DISCHARGE HS | A | 42 | 54 | 67 | 69 | 73 | 66 | 52 | 49 | 76 |
| | B | 38 | 55 | 66 | 67 | 73 | 65 | 51 | 49 | 75 |
| | C | 36 | 61 | 68 | 71 | 68 | 62 | 49 | 46 | 74 |
| RADIATED HS | A | 23 | 36 | 44 | 50 | 57 | 54 | 49 | 43 | 60 |
| | B | 23 | 37 | 47 | 49 | 56 | 54 | 50 | 43 | 60 |
| | C | 26 | 44 | 48 | 50 | 54 | 52 | 48 | 40 | 58 |
| INLET LS | D | 37 | 47 | 59 | 57 | 60 | 58 | 54 | 48 | 65 |
| | E | 34 | 47 | 59 | 56 | 58 | 56 | 53 | 47 | 64 |
| | F | 32 | 48 | 59 | 55 | 56 | 54 | 51 | 43 | 63 |
| DISCHARGE LS | D | 34 | 52 | 62 | 63 | 67 | 60 | 47 | 43 | 70 |
| | E | 34 | 53 | 60 | 62 | 66 | 58 | 44 | 41 | 69 |
| | F | 31 | 55 | 64 | 61 | 61 | 55 | 41 | 37 | 68 |
| RADIATED LS | D | 27 | 40 | 43 | 45 | 52 | 49 | 45 | 37 | 55 |
| | E | 24 | 40 | 43 | 44 | 50 | 47 | 44 | 36 | 54 |
| | F | 22 | 41 | 43 | 43 | 48 | 45 | 42 | 32 | 52 |

VR: High Speed VL: Low Speed

Practical examples of installing TD-SILENT range

The models **TD-1300/250 SILENT** and **TD-2000/315 SILENT** offer solutions to ventilation problems, especially in places where people work and low sound level is required.



Accessories

Mounting accessories



MCA

Non-return flaps to be installed at the fan discharge. They prevent heat leakages when the extractor is not operating.



MAR

Rectangular Duct Adapters enable connection to rectangular ducting.



MRJ

Grilles mounted at the inlet or outlet of the fan, to prevent the entry of any foreign objects that could damage the fan.



MPC

Flow detectors designed to correctly measure pressures at the inlet of series TD devices with airflow straightener.



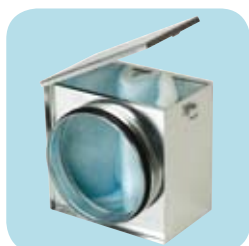
GSA

Flexible aluminium ducts made of a aluminium and polyester exterior covering a spiral steel wire frame. Used for general installations in detached or collective housing and commercial premises.



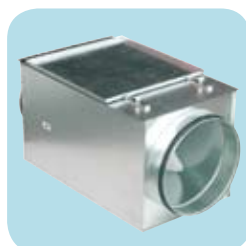
GSI

Flexible individual ducting made of aluminium and polyester. With an inner perforated MO duct, protected by a 25 mm MO fibreglass coating covered with flexible aluminium, reinforced with fibreglass mesh M1.



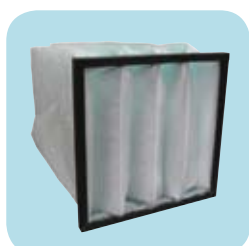
MFL-G4

MFL filtration boxes are of G4 grade filtration and are designed for direct connection with standard circular ducting. The MFL-G4 filtration boxes are supplied with a cover easily removable to replace the filter.



MFL-F

Box in galvanized steel for inserting the MFR F5, F6 and F7 filters. Fitted with inlet and discharge circular duct connection flanges with integrated rubber air seal and an inspection cover easy to open for maintaining the filters.



MFR-F

Class F5/F6/F7/F8/F9 filters.
Maximum working temperature: 80°C
Maximum pressure drop: 300Pa (F5), 350Pa (F6), 400Pa (F7/F8/F9).

Accessories

Electric heaters and accessories



MBE

Electric heaters designed to be installed on the fans discharge side. The minimum air speed through the heater must be 2 m/s.

Maximum air temperature through the heater: 40°C.



PULSER

Electronic controller to regulate the heat output of electric heater in order to maintain a constant pre-selected temperature. Depending on the selected temperature, the controller pulses the entire power output and uses a time-proportional control to maintain that temperature.

Electrical accessories



REGUL 2

2 speed switch



REB

Single-phase electronic speed controller.



CONTROL ECOWATT

Control element for demand controlled ventilation systems in public, commercial residential buildings that automatically modifies the fan speed to adapt it to the needs defined in the system, measured with sensors.



VAPZ

Electronic single-phase regulator that controls the fan speed with a simple contact (presence detector) or an analogical input, 0-10 V or 4-20 mA (CO₂ probe for relative humidity % RH).



SC02-A

Ambient CO₂ and temperature sensor.

SC02-AD

Ambient CO₂ and temperature sensor, with display.

SCHT-AD

Ambient CO₂, temperature and relative humidity with display.



CPFL-S / CPFL-E

Presence Detector for wall fitting, sensitive to infrared radiation by bodies in movement, with a 360° detecting angle. Power supply: 1-230 V.



TDP-S / TDP-D

Pressure sensor. Enables you to control the pressure in the fan inlet.

Pressure range: 0-2500 Pa.

Output signal: 0-10V/4-20 mA



REMP

Motorised damper, opening proportionally and controlled by the BEAS control module.

Power supply: 24 VAC or 24 VD, depending on the models.

The new TD-1300/250 SILENT and TD-2000/315 SILENT models complete the TD-SILENT range (160 to 1000 models)



Low profile "Mixed-flow" fans with sound-absorbent insulation, manufactured in plastic material with an external connection box, a body that can be dismantled and with speed controllable 230 V 50 Hz motor,

fitted with rubber gaskets on the inlet and outlet to absorb vibrations.

(Except the TD-160 SILENT, that is fitted with the special floating motor system patented by S&P)

Low profile



The low profile of the TD-SILENT fan makes them the most effective solution for installations where the space of installation is limited such as false ceilings

Low noise level



Sound waves produced inside the TD, are directed through the perforated inner skin and absorbed by the layer of sound-absorbent material

Easy maintenance



Bi-material support brackets, which in addition to simplifying installation, serve as joint seals

Connection box rotated 360°



Connection box can be rotated 360°, to facilitate easy connection of the power cable

Flexible rubber seal



Bi-material inlet and outlet incorporating a flexible washer to facilitate installation and absorb vibrations

Support bracket



Support bracket for installing on a wall or ceiling, incorporating twin-material support brackets for the motor section that absorb vibration

Easy installation



Loosen and open clamps on both sides



Remove the fan body



Remove the terminal box lid



Connect electrical supply



Remount the fan body by tightening the clamps

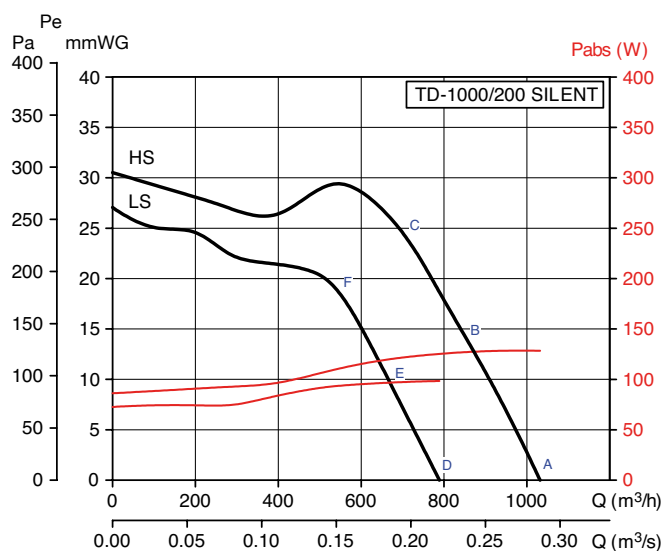
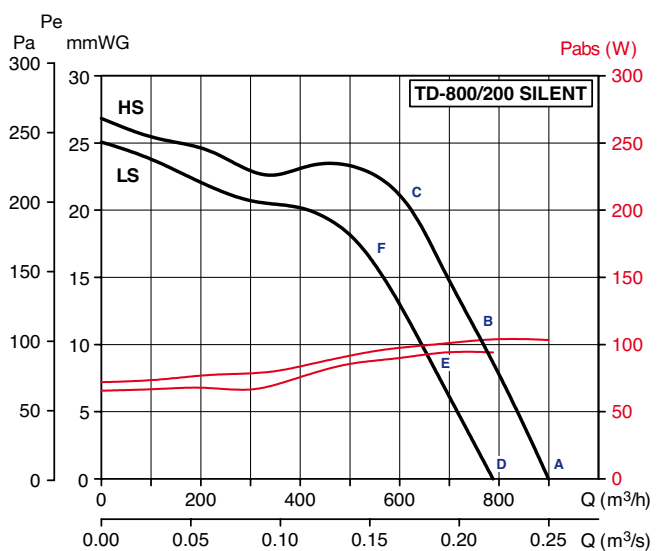
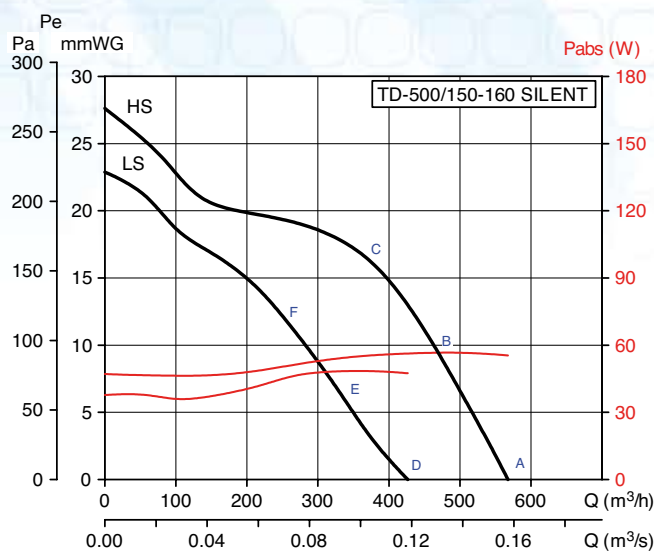
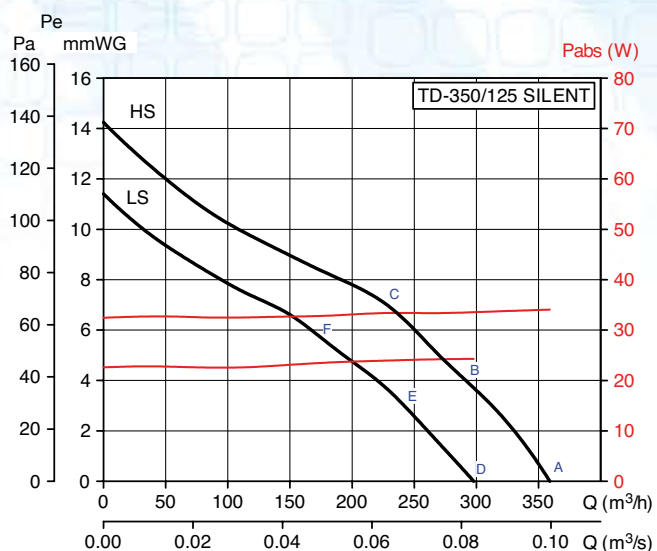
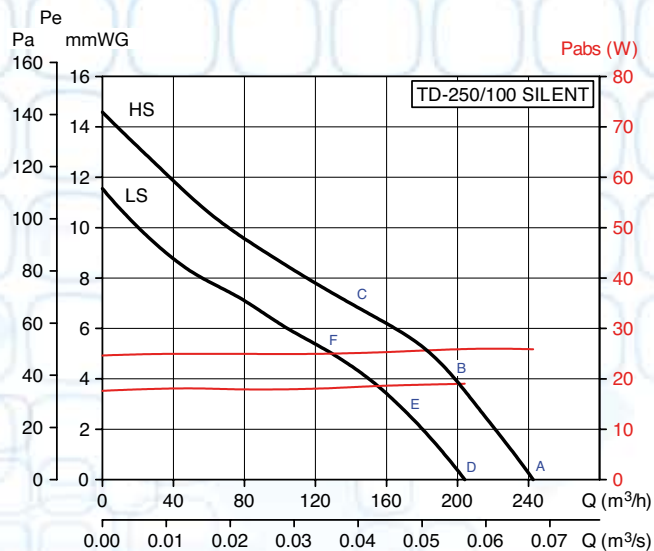
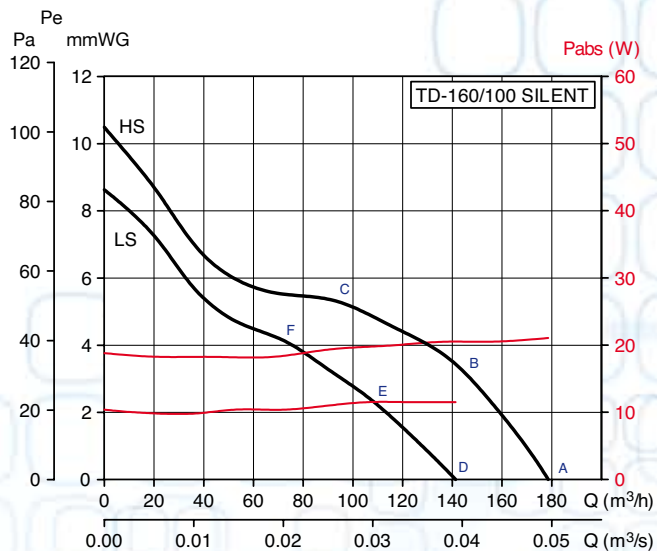
Technical Characteristics

| Model | Nom. speed (r.p.m.) | Maximum absorbed power at OPa. (W) | Maximum absorbed current (A) | Duty at free discharge (m³/h) | Maximum operating temperature (°C) | Sound pressure level* (dB(A)) | Ø Duct (mm) | Peso (Kg) |
|-----------------------|---------------------|------------------------------------|------------------------------|-------------------------------|------------------------------------|-------------------------------|-------------|-----------|
| TD-160/100 N SILENT | 2500 2200 | 25 12 | 0,16 0,10 | 180 140 | 40 | 24 21 | 100 | 1,4 |
| TD-250/100 SILENT | 2200 1850 | 24 18 | 0,11 0,10 | 240 180 | 40 | 24 19 | 100 | 5,4 |
| TD-350/125 SILENT | 2250 1900 | 30 22 | 0,13 0,10 | 380 280 | 40 | 20 19 | 125 | 5 |
| TD-500/150-160 SILENT | 2500 1950 | 50 44 | 0,22 0,19 | 580 430 | 60 | 22 17 | 150 /160 | 6 |
| TD-800/200 SILENT | 2780 2480 | 95 90 | 0,45 0,43 | 880 700 | 60 | 19 18 | 200 | 8,7 |
| TD-1000/200 SILENT | 2500 2000 | 120 100 | 0,50 0,45 | 1100 800 | 60 | 21 20 | 200 | 8,7 |

* Sound pressure level at 3 metres in free field conditions, with ducted inlet and outlet.

Performance curves

- Air volume in m^3/h and m^3/s
- Static pressure in mmWG and Pa
- Absorbed power in W
- Air flow data in accordance with the following standards: ISO 5801 and AMCA 210-99



S&P: A global strategy, a local policy



- FACTORIES
- ▲ R+D+I CENTRES
- ASSEMBLY FACILITIES
- SUBSIDIARIES
- DISTRIBUTORS



www.solerpalau.com

Soler&Palau  **Ventilation Group**